



WINTER
2023/2024

TETON STEWARDS

NEWSLETTER OF THE GRAND TETON NATIONAL PARK FOUNDATION



WILDLIFE RESEARCH ADVANCEMENTS IMPROVE CONSERVATION



Photo: Diana Stratton

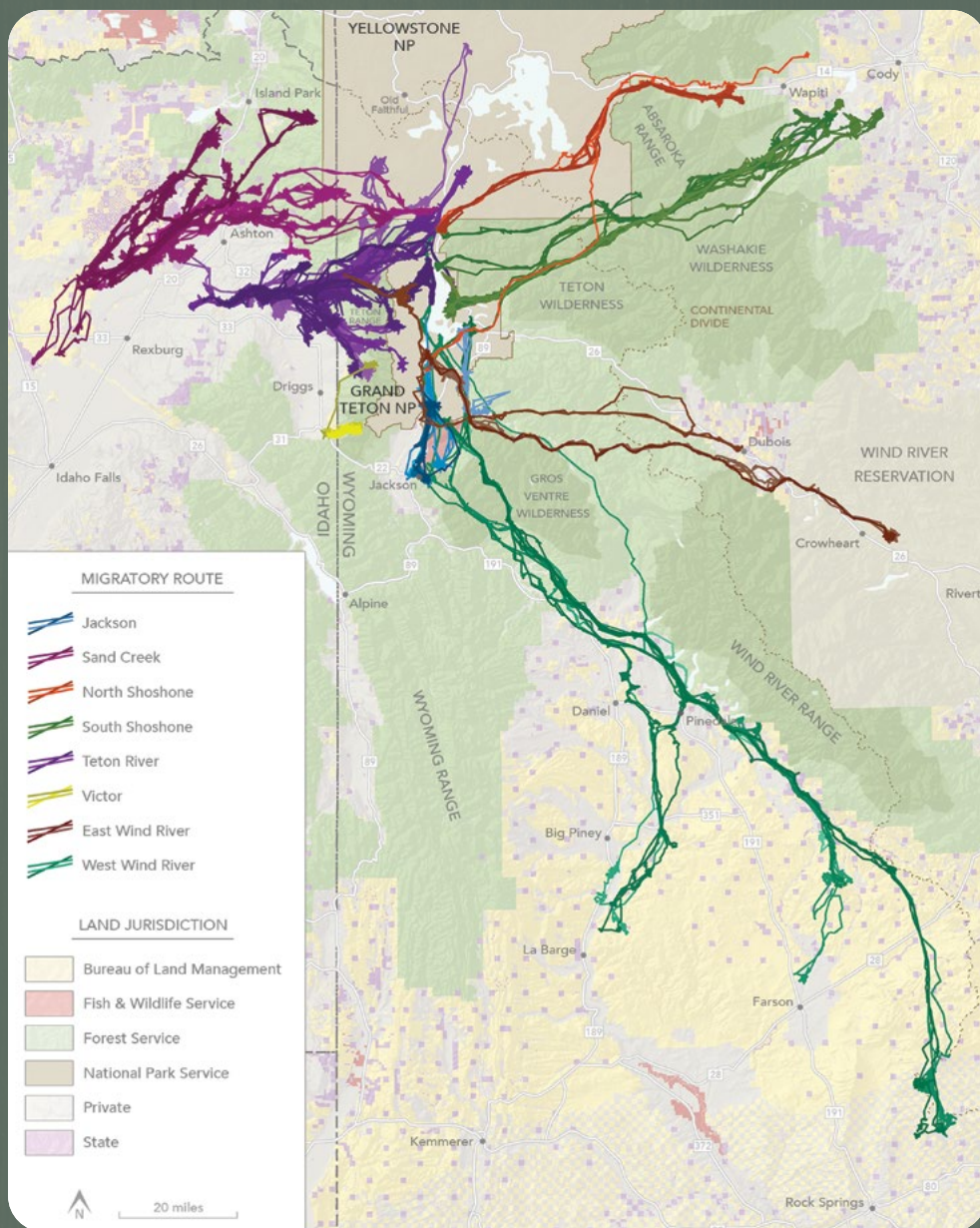
Scientific research is one of the core pillars that support Grand Teton National Park's wildlife and natural resources stewardship program. Combined with on-the-ground conservation, a robust education platform, and guided by National Park Service policy, the park strives to preserve the natural ecosystem processes that have persisted nearly unchanged for 10,000 years.

During the last few decades, advancement in research techniques has profoundly enhanced our understanding of complex natural systems and how humans interact with them, facilitating similar improvements in information-based decision making by park managers. Innovations in radio telemetry, led by battery and electronic miniaturization technology, progress in DNA extraction and genotyping procedures, applications of environmental sound recordings, and the creation of novel, landscape-level human activity measures have transformed field-based wildlife studies.

A mainstay of wildlife studies for more than fifty years, radio telemetry allows the tracking of animals after they have been captured and fitted with a transmitter. In its infancy, the need to locate tagged animals in the field with handheld or plane-mounted antennas was labor intensive, sometimes dangerous, and often provided only approximate geographic positions. But in the early 2000s, telemetry studies were transformed when GPS transmitters became widely available. Although expensive, GPS allowed the automated collection of accurate locations taken at rates many orders of magnitude greater than

formerly possible. Battery requirements limited early models to large animals because of weight, and initially most models required retrieving the transmitters to obtain data stored onboard. The 2004 *Path of the Pronghorn* research deployed this new technology, resulting in a detailed account of the route and eventually the first federally protected migration corridor in U.S. history. The return of grizzly bears to historic habitats in Grand Teton was also documented in detail during this telemetry era.

As GPS quickly dominated the field, units that could relay data from the an-



Left: Migration paths of mule deer that summer in and around Grand Teton National obtained with GPS and satellite uplink technology. The paths reveal distant winter ranges and critical corridors in need of protection. *Top right:* Use of handheld telemetry antennas has been nearly eliminated because of GPS telemetry advancements. *Bottom right:* DNA from bighorn sheep scat collected at mineral licks has been used to estimate Teton Range population size.

imal-mounted transmitters to researchers in real time via satellites became available—enabling another huge step forward in the diversity of study designs. Park biologists and their collaborators began using this technology on nearly all their transmitters. GPS transmitters can now also relay data via cell phone towers where adequate service is present, conserving precious battery power and extending transmitter life. And, with improvements in battery and electronic miniaturization, nearly any size of animal can now be tracked with GPS technology. Today, units as light as one gram (half the weight of a dime) are available.

On some animals, particularly birds, tiny solar panels can keep these units functioning for many years. Advancements in DNA extraction and genotyping, and resulting decreases in associated costs, have likewise become more mainstream in a variety of wildlife studies. In Grand Teton, using DNA extracted from bighorn sheep fecal samples and identifying individuals through genotyping has produced the first robust population estimates ever for the native, at-risk Teton Range herd. Knowing population size, how many sheep are breeding,

occurrence of past genetic bottlenecks, and other genetic parameters is critical for decisive and prudent conservation planning for small, genetically isolated populations. Similar efforts have been used to assess the genetic status of Jackson Hole’s small sage grouse population, Yellowstone ecosystem grizzly bears, and northern Rocky Mountain wolves. Newer applications can identify minute levels of DNA in water, soil, or scat samples to determine the presence or absence of a species. Biologists are now monitoring the distribution of rare harlequin ducks in the park simply by

Continued



Teton Raptor Center biologists have improved studies of nesting great grey owl population dynamics through new bioacoustics monitoring applications (*left*). DNA analyses have helped determine the conservation status of the park's small, isolated sage grouse population (*middle*). New indices of human activity on the landscape, which can have profound impacts on wildlife, are being used to better assess visitor impacts and how to mitigate associated effects on wildlife (*right*). Photos: Owl/Brad Schwarm, Grouse/Diana Stratton

sampling water in likely stream courses, rather than conducting the exhaustive physical surveys of the past (which also disturbed these reclusive birds). Using DNA metabarcoding, which can identify multiple species from single samples, researchers are determining diets of big-horn sheep as part of a nutritional carrying capacity study, as well as contrasting prey of wolves, coyotes, and red fox.

Non-invasive bioacoustics monitoring is also on the forefront of new research and conservation techniques. By deploying autonomous recording units (ARUs) in the field, biologists can record a wealth of ecological parameters—including species presence and identification of specific individuals within a species—without the need to directly observe or capture and mark animals. Annual survival, migration trends, effects of climate change, and more can now be gleaned from recorded data. The ARUs capture sounds that humans often miss, provide a permanent record, and nearly eliminate researcher disturbance of animals in the field. Key advances in automated processing of enormous recording data sets are making their use powerful and

are practical additions to wildlife science. In Grand Teton, biologists are investigating the presence and status of common loons, evaluating long-term changes in park natural soundscapes, and monitoring demographic trends in sensitive owl populations.

Among the most interesting and far-reaching wildlife research innovations are new indices of human activity on the landscape. Humans can have profound impacts on animal activity, essentially competing with them for space. Since protected areas like Grand Teton do not have infinite capacities for absorbing visitation increases without resource impacts, understanding and mitigating them has become an essential attribute of ecosystem stewardship. Historically, human disturbance has been estimated by presence of developments—roads, trails, buildings—and data gleaned from trail counters or specific activity permits (backcountry travel, for example) that are only roughly geographically referenced. But the age of social media and widespread use of GPS devices, including cell phones, has changed all this, resulting in robust and

spatially specific data (Strava Heat Map, for example) that can now be used to evaluate effects of human disturbance on wildlife at higher levels of inference. The park and its collaborators are actively pursuing the use of these data in future studies.

These and many more advances in statistical analysis software, habitat modeling, and sophisticated study design have allowed quantum-level increases in understanding wildlife and contemporary influences that challenge their long-term conservation. At Grand Teton National Park, consistent Foundation funding has been key in leveraging support from a wide range of academic, government, and private partners that, together, bring their best game and newest technology to address the park's most pressing wildlife research and conservation needs.

This article was written by Steve Cain, former wildlife biologist at Grand Teton National Park, where he directed wildlife management, conservation, and research for more than twenty-five years.



Photos 2011—Left: Grizzly bear 399 and her cubs of the year in early summer. Right: Grizzly bear 610 with her two cubs and one cub adopted from 399's litter. Below: Twenty-four-year-old 399 with her rare four cub litter in 2020. Photos: Above-Diana Stratton, Below-Dinita Delimont

DNA TECHNOLOGY CONFIRMS RARE GRIZZLY CUB ADOPTION

In spring of 2011, grizzlies 399 and 610 emerged with cubs of the year in Grand Teton, 399 with three and 610 with two. Bear 610 is 399's daughter.

In late July, relatively close to one another, 610 was observed with three cubs and a few days later 399 with only two. The extra cub stayed with 610 all summer, fueling speculation that a rare cub swap had taken place.

Biologists used DNA samples from 610 and 399—obtained during previous research captures—and 610's three cubs—secured non-invasively in a hair snare—to verify this uncommon event. Photographs of 610 and the three cubs visiting the hair snare and subsequent analyses of hair

samples left by the cubs confirmed the identity of all four bears, including one of 399's cubs travelling with 610.

Genetic fitness reasoning predicts that bears would be more likely to adopt related young. But documenting adoptions is difficult, and discerning relationships among the players is usually not possible. In both this case and another in Yellowstone, DNA technology proved the adopting parent was the daughter of the adopted bear's mother and thus also the adopted bear's sister.



Message from President
LESLIE MATTSON



As the sun sets on 2023, I am proud of all that Grand Teton National Park Foundation has accomplished this year. Our board approved our new long-range plan, which will leverage our past achievements and guide our work in partnership with the park through 2029—Grand Teton’s centennial anniversary.

The completion of this strategic document marks more than one year of collaboration with the park’s leadership team, our staff, and board and resource council members. While our vision remains the same, this new plan allows us to remain strong and nimble to support our partner as new needs and challenges emerge.

A growing focus area for our work with Grand Teton is engaging regional indigenous communities. We began this effort in 2016 by supporting a Tribal Youth Corps program that brought Native youth to the park for month-long internships where they completed trail work and learned about careers while connecting with their ancestral lands. This program was severely impacted by the pandemic. Last winter, we were presented with the opportunity to work with Ancestral Lands Conservation Corps, an organization that facilitates on-the-job training for Native youth in the southwest, and invest in opening an office for programming in the Wind River community. The goal is to leverage our partnership with Grand Teton to provide career training opportunities that are translatable to jobs on the Wind River Indian Reservation. This will build on our current efforts that bring teens from Fort Hall to Grand Teton, and we look

forward to continue supporting indigenous youth with ancestral ties to this landscape.

Our new fiscal year began on October 1, and we welcomed a new board chair—Gregg Ward. Gregg served on our resource council starting in 2016 and has been on our board since 2018. He chaired our strategic planning committee and will be a tremendous asset to lead our organization during the next three years. We are also grateful for our past chair, Debbie Barker, and the incredible leadership she provided to our organization throughout the pandemic and strategic planning process. We are in a stronger position because of her guidance.

The Foundation would not have the impact that we do without our dedicated supporters. I hope you enjoy learning more about all that your generosity enabled in 2023 throughout the pages of this newsletter. Thank you for your passion and commitment!

Leslie Mattson

Leslie
President

A longtime friend of Grand Teton National Park Foundation, John L. Nau, III, has made an extraordinary challenge grant toward RENEWING LIFE ON MORMON ROW—our multiyear project that is preserving the park’s most beloved historic district. All gifts to Grand Teton’s largest cultural resource project to date will be matched dollar-for-dollar up to \$300,000. Call 307-732-0629 or visit gtnpf.org/donate and list “Mormon Row” in the comments field to have your investment doubled today. THANK YOU!



2023 HIGHLIGHTS

Raised \$10,308,345 in support of Grand Teton National Park, enabling more than 30 high-impact programs and projects. Our partnership highlights include:

Visited 6 of the 11 Teton glaciers 20 times to document annual changes in snow depth, ice mass, and more to better understand the impact of changing weather patterns and precipitation on this essential water resource



Deployed 9 radio collars, monitored 5 packs by air and ground, and collected thousands of GPS locations for area wolves to better understand population dynamics within Grand Teton and Jackson Hole



Began planning and design for a multiyear capital project that will renew visitor facilities and trails at the park's most popular year-round destination—Taggart Lake

Photos: Wolves-Danita Delimont, Others-Tyson Chavis, Ryan Kelly, Ryan Sheets, and NPS

Moved the Roy Chambers Homestead at Mormon Row off of its original foundation so a new one could be built and the structure can be adaptively reused for seasonal workforce housing—a critical need for Grand Teton



Seeded 80 acres, planted 900 container starts, collected hundreds of pounds of native seed, and grew 4,000 container plants as part of our multi-year project to restore sage-brush-grassland habitat for the benefit of wildlife

Completed pika surveys in 115 habitat patches over the course of 30 field days to better understand why this species thrives in Grand Teton and is struggling elsewhere throughout the west



Engaged 118 young people in Grand Teton through 5 unique programs that provide transformational outdoor, education, and employment opportunities and offer hands-on experiences as participants begin to make important career and lifestyle decisions



Educated countless park visitors about resource protection and safety through 4 programs—Wildlife Brigade, String Lakers, Nordic Ambassadors, and Snake River Ambassadors—whose volunteers contributed thousands of hours of their time

Provided funding for a park avalanche forecaster to collaborate with the Bridger-Teton Avalanche Center and contribute park-specific snowpack assessments and observations that were integrated into the daily forecast, ensuring backcountry skiers and riders had accurate data to make informed decisions



Began work on the third and final site—Moose Landing—to be improved by our multiyear Snake River Gateways project that is renewing access and protecting resources along the river in the park



1,772 DONORS
SUPPORTED OUR PARTNERSHIP WORK



NPS ACADEMY ALUM CAMERAN BAHNSEN RETURNS TO GRAND TETON

FOR NEW ROLE AS TRIBAL COMMUNITY ENGAGEMENT FELLOW

In 2019, Cameran Bahnsen was living in Los Angeles and leading field trips for Title 1 schools into the Santa Monica Mountains. She was inspired by the experience and decided to apply for the 2020 National Park Service Academy (NPSA)—a program that provides on-the-job training for college students that the Foundation has funded for more than a decade. Cameran was fortunate to be placed in an internship that year in Grand Teton National Park as an interpretive ranger, was then hired as the park's community engagement associate, and has just rejoined Grand Teton as the new tribal community engagement fellow. We spoke with Cameran about

her time in NPSA, how her passion and experience led her back to the Teton landscape, and what she is looking forward to in this new role.

Where are you from and what is your connection to national parks?

I grew up in Ventura County, California. I had been to national parks before NPSA, but I didn't visit a lot as a kid. I think I've always felt connected to the outdoors because of my cultural background. I am Assiniboine on my mom's side, and my family comes from the Fort Peck Reservation in Montana. As Native people, our culture and traditions are inextricably connected to the environment.

Even though I grew up off the reservation as an urban Native, my mom played a big role in keeping us as connected as possible to our culture. She has been an important role model in helping me connect to the outdoors in everyday ways.

What was your experience like in NPSA?

I remember feeling so excited to be there. I loved the job. I loved the people that I worked with, and I loved the Tetons. It was one of the best summers of my life. The mountains are so special and it's really amazing to experience this place. Professionally, I deepened my understanding of the National Park Service



“What I’m really passionate about is finding ways for local tribes and indigenous peoples to connect to Grand Teton...They are the original stewards of this place, before the National Park Service was even an idea.”

and public lands, and gained amazing mentors and community connections. I was especially motivated by tribal-park relations and wanted to keep moving in that direction.

How did NPSA impact your education and career path?

I recently graduated from the University of California Santa Barbara (UCSB) with a degree in environmental studies and a minor in Native American studies. Being connected to and employed by Grand Teton at various times throughout my undergraduate career was awesome because I was able to draw on my professional experiences, which added so much value while taking college courses at UCSB. I took classes on public lands, conservation, and environmental education and got more involved in UCSB’s outdoor program.

What is your new position?

I just got hired as the tribal community

engagement fellow for Grand Teton. I will be working on building relationships with tribes from Fort Hall and Wind River—the two nearest reservations to the park—primarily through youth programs. Our main focus is to engage young people in Grand Teton, teach them leadership skills, and expose them to conservation careers. There’s also a big emphasis on cultural history, and we provide a space where participants can connect with their traditions, language, and ancestral lands here in the park. The other part of this job is to help front-line interpretive rangers incorporate indigenous history, culture, and stories into educational programming.

What are you most excited about with this role?

What I’m really passionate about is finding ways for local tribes and indigenous peoples to connect to Grand Teton, which is their traditional homelands. They are the original stewards of this

place, before the National Park Service was ever an idea, and their connections to Grand Teton are incredibly deep. I’m also passionate about telling the tribal story of the park because I think that it is really important for people to know as they’re traveling around these places. Tribes have been taking care of the land for thousands of years. That’s been my favorite part about this; bringing that perspective to light with the public in the best way that I can. I’m also excited to just be in Grand Teton, living in a beautiful place, with some of my dearest friends. I couldn’t ask for anything better.

We look forward to supporting Cameran in her role as the tribal community engagement fellow and watching her impact continue to unfold in Grand Teton. To learn more about youth programs supported by the Foundation, contact Maddy Johnson—maddy@gtnpf.org or 307-732-0629.



Photo: Beth and Mike King

ESTABLISHING THE KING ENDOWMENT:

GRAND TETON NATIONAL PARK FOUNDATION'S NEWEST NATURAL RESOURCES AND WILDLIFE ENDOWMENT FUND

Beth and Mike King are both self-proclaimed nature lovers. From North Carolina, they have been visiting Grand Teton National Park since 1984 and believe the Tetons are one of the most beautiful landscapes in the world.

The Kings are captivated by the gorgeous scenery and magnificent wildlife that call this place home. As avid photographers and wildlife watchers—it is a sort of paradise. But the park also represents something more: it is a place of rejuvenation. When they visit, Mike and Beth find a sense of tranquility and renewal of the spirit.

The Kings' passion for wildlife is evident in their volunteer work back home with sea turtle conservation, and here in the Tetons as they seek quiet places for wild encounters. Once, while hiking in Cascade Canyon years ago, they stopped for

lunch on a rocky outcrop above Cascade Creek. They were alone, and suddenly a big bull moose appeared from behind a patch of willows, browsing on vegetation. For thirty minutes, the Kings observed the bull as it munched its way downstream toward their lunch spot, and up-close they saw that he was in his velvet stage. Eventually, he ambled away, but that intimate and personal wildlife experience stuck with them.

Their love of wildlife and love for the park landscape is a legacy that will live on through their planned gift to the Foundation. In 2022, the Kings generously established a



new endowment fund that will support the conservation and management of wildlife and natural resources in Grand Teton in perpetuity, ensuring the continued ecological integrity of the park ecosystem and the wildlife that depend on this habitat for survival.

In addition to their endowment, the Kings are planned giving donors and continue to support other key park initiatives. They recognize the strength of partnership between the Foundation and Grand Teton, and the resources the organization is able to bring to address critical park needs. Mike and Beth were supporters of Jenny Lake—the Foundation’s park service centennial effort to renew front and backcountry trails at this popular area in the park. It was their participation in this project that ultimately affirmed their interest in establishing an endowment. “When the project was completed and we saw all the work that was done with trail repair, parking, and access improvements, we were so impressed. You know the feeling you get when you give someone a present they really like and how good it makes you feel? That was the feeling we had knowing we were a part of something that would enhance the Teton experience for generations to come. Seeing firsthand how our support is improving the park experience is appealing, and it is because of this that we decided to create an endowment fund for our favorite area of park stewardship—wildlife.”

We are grateful to the Kings for their longtime generosity and foresight, which will benefit wildlife and wild habitat today and for generations to come.

GIFTS ANYONE CAN MAKE

Creating a meaningful legacy through a planned gift will support our partnership for many years to come, leaving a lasting mark that will enable Grand Teton National Park Foundation to sustain its mission for generations.

Depending on your charitable estate goals, circumstances, and the giving vehicle(s) that are right for you, you could increase your income, decrease your estate taxes, or receive a tax deduction by making a planned gift:

- Make a gift that costs you nothing during your lifetime by leaving a bequest to Grand Teton National Park Foundation in your will or trust.
- Turn surplus life insurance coverage into a charitable gift and take a tax deduction now.
- Preserve your estate for your children and, at the same time, deliver ongoing support to the Foundation by establishing a Charitable Lead Trust using appreciated assets.
- Name the Foundation as the beneficiary of your retirement plan while leaving more of your estate to your heirs through qualified income tax avoidance.
- Use appreciated securities like stocks, bonds, or mutual funds and realize larger tax savings and avoid capital gains liability.
- Create an endowment to ensure your favorite areas of park stewardship are sustained in perpetuity.
- Establish a Donor Advised Fund, receive an immediate tax benefit, and increase your philanthropy at the same time.

If you’ve already made the Foundation part of your estate plan, please let us know so that we can thank you and recognize your inspiring commitment through inclusion in our Horace Albright Society for legacy gift donors.

Thank you for your consideration!
To learn more, contact Wayne Turner at wayne@gtnpf.org or call (307) 732-0629.



RENEWAL OF TETON CREST TRAIL

ABOVE LAKE SOLITUDE IMPROVES CONDITIONS FOR HIKERS

The view of Mount Owen, Grand Teton, and Middle Teton from Paintbrush Divide looking into Cascade Canyon is unforgettable. It requires a minimum of seventeen miles (round trip) and nearly 4,000 feet of elevation gain to get there—making this point along the iconic Teton Crest Trail one that is on many hikers’ “must see” list when visiting Grand Teton National Park. Completed by the Civilian Conservation Corps in 1938, this portion of the Crest Trail has been etched in the memories of everyone who has been fortunate enough to experience it.

2023 marks the fourth year that the Foundation has funded work along the nearly 100-year-old, high alpine route in Grand Teton, which has not seen regular

or significant maintenance prior to now due to the time, skill, and financial commitment required. Park crews focused their efforts on the trail leading from Lake Solitude to Paintbrush Divide this season. Their goals were to make safer and easier travel by: repairing historic stone walls, removing large boulders that were obstructing the trail, improving drainage structures to reduce erosion and resource damage, and regrading portions of the path.

Completing these complex objectives at high elevation during the wettest summer in twenty-five years was a significant challenge. In addition, the group found themselves working in unstable boulder fields that were much more dynamic than anticipated.

The demanding conditions did not prevent the trail crew from making significant accomplishments during their four, eight-day backcountry hitches spent at Lake Solitude this season. “It was extremely rewarding to see the result of the improved accessibility through difficult terrain,” Grand Teton Trail Crew Leader Corey Kruse said. “The group had many visitors share their thanks and appreciation to see us working in the high alpine backcountry.”

Teton Crest Trail renewal efforts will continue next summer in the southern portion of the park in Death Canyon near Static Peak and Buck Mountain Pass. To learn more about the Foundation’s support of trail improvements in Grand Teton, contact Molly Ruffle at 307-732-0629 or molly@gtnpf.org.

—2023 TETON CREST TRAIL ACCOMPLISHMENTS—



**410 square feet of
RETAINING WALL
constructed**



**16 LARGE
BOULDERS
removed**

**24 new STEPS
and 6 WATER
BARS built**



**4,890 feet
of TREAD
REGRADED**

**4 CREW MEMBERS
and 1 SUPERVISOR
spent 1,460 HOURS
supporting the project**

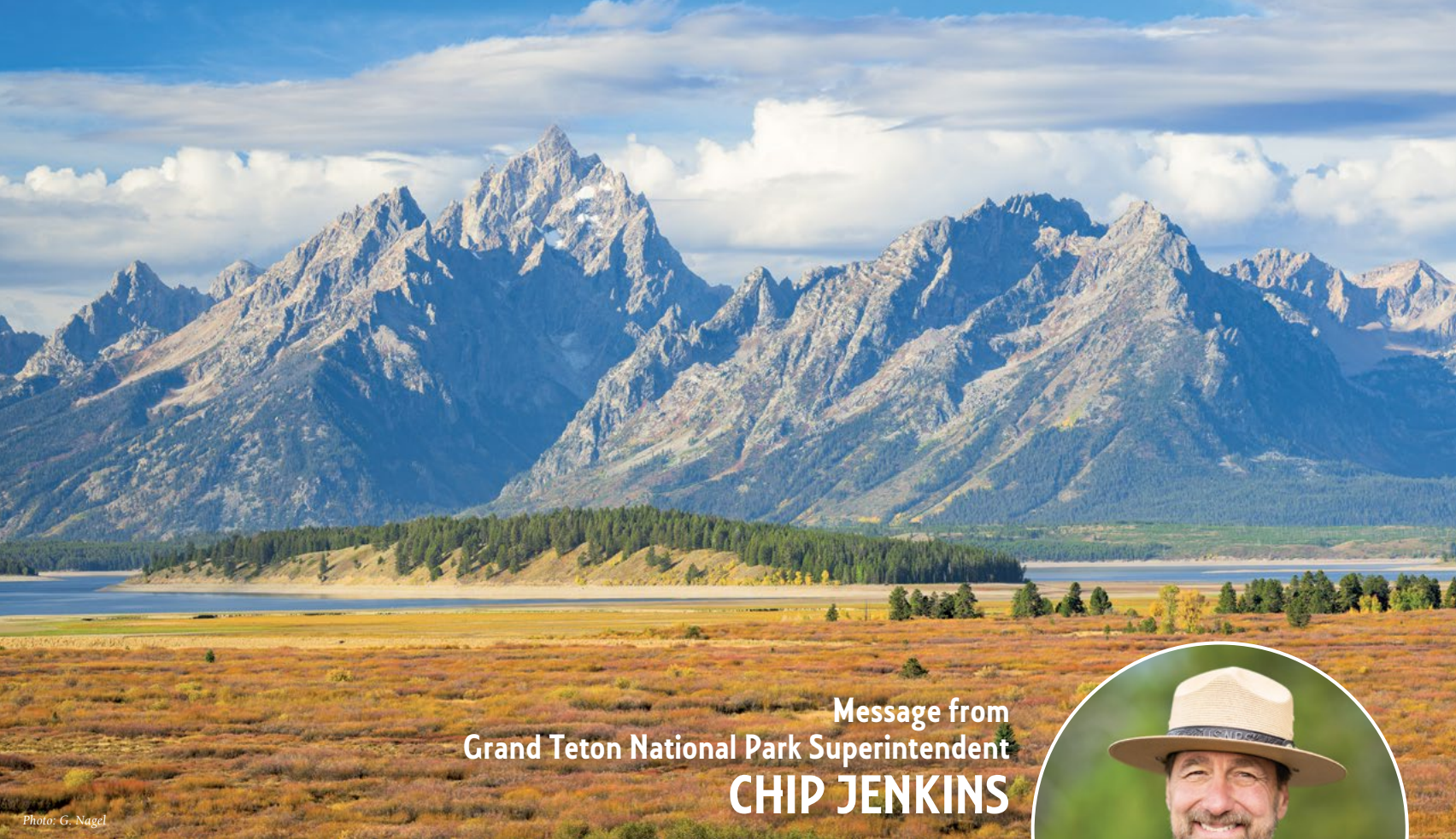


Photo: G. Nagel

Message from
Grand Teton National Park Superintendent
CHIP JENKINS



Winter is a time when cold temperatures and early sunsets encourage people to gather, share time, reflect on legacies through storytelling, and look forward to what the new year will bring.

As we imagine the rejuvenation of a new year, we also look back and celebrate the sixtieth anniversary of the Greater Yellowstone Coordinating Committee (GYCC), an organization that brings federal land management and state wildlife management agencies together to achieve larger common goals, while staying true to their individual missions.

The Greater Yellowstone Ecosystem (GYE) is managed collaboratively, sharing resources, science, understanding, recognition, stewardship, and passion about the very values we are here to protect—whether it's a park, refuge, or forest. Having the like-minded collaboration between agencies allows us to work together on larger issues, like the health and resiliency of the Snake River, wildlife corridor migration protection for ungulate species, prevention

of invasive aquatic species in GYE waters, noxious weed spread prevention, dedicated protection of grizzly bears through educational campaigns, and vital restoration efforts for threatened and endangered species, including the most recent listing in Grand Teton—the whitebark pine tree, which is one of the key food sources to ensuring bear's survival in hibernation during our long winters.

All of the work we do in Grand Teton National Park cannot be done alone. We rely on our agency partners to work with us to protect and conserve these fundamental resources and values. In addition to fellow agencies, we are enormously grateful that we have Grand Teton National Park Foundation supporting all we do. The Foundation has been, and continues to be, a fundamental partner.

Your contributions enhance and improve all aspects of science, technology, research, education, and the visitor experience beyond measure, creating a conservation legacy over the last twenty-six years.

As we cross the winter solstice, I prepare to accept the volunteer role as chairman of the GYCC. I continue to reflect on the unwavering support the Foundation has provided, and I know we will continue to collaborate. I am excited and looking forward to what opportunities the new year brings.

In appreciation of all the dedicated support,

*Chip Jenkins
Superintendent
Grand Teton National Park*

THANK YOU TO ALL WHO HAVE SUPPORTED GRAND TETON NATIONAL PARK FOUNDATION IN 2022–2023

Grand Teton National Park Foundation received gifts from the following donors between October 1, 2022 – September 30, 2023. Please contact Lenea Luna at 307-732-0629 with corrections.

INDIVIDUAL DONORS

A

Anonymous (38)
Audrey Abbott
Myssie & Barry Acomb
Maude Adams
Marjorie Adler
Virginia & Michael Adler
Kathryn & Fernando Aguilar
William Ahrens
Fraida & Bob Aland
Marcia Kunstel & Joseph Albright
Tony Aldrich
Alison Alfers
Barbara Allen & Peter Dittmar
Elizabeth Mack & David Allen
Char & Don Allen
Kimberly Allen
Margaret Sullivan & Joe Alvarado
Emily & Jim Ambler
Patricia & George Amlin
Karen Kolodny & Hank Amon
Barbara & Mark Amstutz
Joyce Anderson
Susan & Richard Anderson
Pamela Anondson
Mary Ann & Fred Anthony
Rebecca & Andrew Apfelberg
Joanie & Arch Aplin
Mary & Dan Armour
Susan & Geoff Armstrong
Dana Armstrong
Jeff Armstrong & Mary Senausky
John Armstrong
Tena Arnesen
Catherine Ashford
Mary Ashworth
India & William Askew
Reverend Dennis C. Asp
Michael & Tommy Atella
Cathy & Samuel Atkins
Victoria & Charles Atwater
Darlene Aucoin
Dana & Darla Audio

B

Mickey Babcock
Trina Bachman
Arthur & Rhonda Baines
Carole & Burke Baker III
Pat & Daniel Baker
Jessica Baker & Brenton Reagan
Jill & Josh Baker
Burke & Elizabeth Baker Family Fund
of the Greater Houston
Community Foundation
Al Baldwin
Barbara Baldwin
Joan Baldwin
Nancy Sue & Judson Ball
Rachel & Michael Ball
Janice Ballak
Rebecca & Dmitry Balyasny
Debbie & Randy Barker
Penelope P. Barnes
Geneva Chong & David Barnett
Harriett Barrett
Red Barris
Julia & Jim Bartholomew
Penny & Max Bartko
Mikaela & Ben Bartlett
Pilar Bass
Donna & Paul Beaupre
Sara Beck
Marisa & Robert Bejarano
Sarah & Tim Belk
Kathy Gasaway & James Bellamy
Katherine Brooks & George Beller
Frank Bellinghiere
Lisa Benavitch-Green
Grace Bender
Lisa & Joel Bender
Gainor & Joseph Bennett
Willo Carey & Peter Benoliel

Andrea Bent
Dana Bergeman
Pauline Bergner
Micha & Robert Berkheimer
Janice Berman
Sally Berman
The Berney Family
Karen & Dan Bernstein
Hillary & Mark Berry
Linda & Robert Berry
Carol & Dennis Berryman
Yvonne Besvold
Susan & Ray Betz
Diane Bevin & Mike Heslop
Felicia Bianchi
Dee & John Bianucci
Cathy & Jim Bierman
Marianna & Gary Binning
Susan & Michael Bird
Susanna & Walter Bird
Cici & Rob Birnberg
Helen & David Bishop
Kimberley Black & John Shelton
Diane & John Blackmon
Marilyn Hughes Blackmon
Margaret L. Blair
Lisa Bleeke
David Blocher
Irene Beardsley & Dan Bloomberg
Erica Roberts & Jonathan Blum
Peggy Boggs
Nancy & Joseph Bohne
Karen Bokot
Lisa & Paul Boken
Valerie Boos
Sara Martin & Richard Borgman
Jocelyn & Aaron Boss
Laurie Boss
Norma Bourdeaux
Tina & Tom Bourdeaux
Agnes Bourne
Elizabeth & Bruce Bowen,
Bowen Family Foundation
Daniel J. Bowen & Tenley Thompson
Margaret & Charles Bowen
Judith & Tom Bowser
Elizabeth & William Box
Dr. & Mrs. Nader Bozorgi
Mystelle Brabbee
Sarah & Robert Braddock
Clint & Carrie Bradford
Catherine & Williamson Bradford
Lisa & Brad Bradley
Shannon & Joe Brady
Jake Bramante
Lindsay & Jackson Brandenburg
Philip Bredezen & Andrea Conte
Howell A. Breedlove,
Howell A. & Ann M. Breedlove
Charitable Foundation
Debbie & Robert Breedlove
Lisa Brenskelle
Kathy & David Bressler
Leah Bridger
Victoria Briscoe
Lori Bristol
Shelly & Jeff Brodie
Susan & Clark Brooks
Diana & Michael Brooks
Tony & Linda Brooks,
The Brooks Foundation
Leah Bross
Christopher Brown
Maureen & David Brown
Signe & Eugene Brown
Stephanie Brown
Helen & Stephen Brown
Tami J. Brown
Lyons & Zoey Brown
Frank Brummer & Andrea Gerken
Barb Brunjes
Paul Bryan
Mary Lou & Dennis Brydon
Kristen & David Buck
Anna Bennett & John Buckley
Mary Kate Buckley

Gary Buczkowski
Barbara Rothenstein Budasoff
& Daniel S. Budasoff
Cheryl Budzinski
Ben Buettell
Thomas Burch
Joan Burdett
Kimberli R. Burdett
Kim & Frank Burgess
Theodore Burke
Terri Smith & Ted Burke
Lynn & Sandra Kay Burks
Anne Burmark
Michael Burnett
Anne & Charles Burnham,
The Burnham Family Foundation
Frannie & Gordon Burns
Barbara & Greg Burns
Andrea & Henry Burroughs
Mary & David Bushnell
John Bushnell & Summer Golden
Marian & Dennis Butcher
Ceci Butler

C

Debra Cafaro & Terry Livingston
Meriam Calabria,
Meriam Calabria Foundation
James Caldwell
Edward Callaghan
Beth & Richard Callaway
Donna Callejon
Harry Calvino
Lynda & Davi Camalier
Mary & Brian Campbell
Christopher Campbell
Gretchen Campbell
Karen L. Campbell
Abby & Leon Campbell
Terri Campbell
Tushara Canekeratne
Donna Canning
S. Cardillo
Jane & John Carey
Lauri Carey
Lisa Carlin
Betsy Carlin & Becky Watson
Tracy Carlin & John Kremer
Barbara & Jerry Carlson
Chad Carlson & Edward Westerman
Dorothy & Dane Carney
Leah & Randy Carpenter
Trudy & Bill Carpenter
Joan Carr
Ann & Vance Carruth
Betsy Casselman-Porter
Stephanie & Lincoln Chafe
Gordon Chamberlain
Liz & David Chandler
Joe Chandler
William Chanley, Jr.
Karen & James Chapman
Jinx Chapman
Ana & Tom Chapman
Sandy Chapman
Sarah & John Chapoton
Carol Chappelle
Sandra Charles
Noah Charney
Karen & Stan Chatham
Rhea C. Lewis & F. David Chavez
Beverly B. Cheek
Doreen & Tom Cheney
Shirley & Ed Cheramy,
The Cheramy Foundation
Kyra Cheremeteff
Fran & Ron Chilcote
Thom Chirurg
Jean Choquette
Penny Oslund & Billy Chow
Franklin Chow
Patricia Christensen
Erica & Peter Christman
Tarri Christopher
Kathy Wehling & Curt Cichowski
Marcia J. Citron & Mark A. Kulstad

Carla & David Clair
Donna L. Clark
Sherry & Ken Clark
Anne & Laurance Clark
Natalie Clark & Henry Armour
Richard Clark
Emily & Craig Clarke
Jennifer & Raymond Clarke
Teresa & Tom Clawson
William Clegg
Jane & Gary Clemans
Joann Clewes
Eugene Cochran
Barbara & John Cochran
Jon Cocks
Jimmie & Rich Cogburn
Barbara Cogdell
Linda & Timothy Cohane
Jay Cohen
Jeffrey R. Cohen
Ann & Ira Cohn
Martha E. Cole
Deborah & Robert Collins
The Collister Family Fund
Gail Williams & Larry Combs
Andrea Commaker & James Levin
Valerie Conger
Alexi & Steven Conine
Judy & Bruce Connery
Katharine Conover-Keller
& Fred Keller, Systemic Change Fund
Sue Consolo-Murphy & Kerry Murphy
Krista & Michael Cook
David Coon & Gail Jensen
Barry Cooper
Diana Cooper
Martha & Reid Cooper
Kathryn & John Corboy
Christopher Coronel
Susie Cosden
Janet & John Costello
Helen & Michael Cottingham
Kathy & Royal Coulter
Jay Covington & Sharee Merrill
Kathryn Maney & Jim Cowles
Deb Cox
Linda Cox
Judy & Billy Cox
Carole Coyle
Pat Coyne
Eva & Peter Crane
Joan Crittenden & Esperanza Herrada
Julie & Phillip Croll
Debra & Thomas Cronin
Dr. Engin Crosby
Tali Crozer & Family
Brenda Cabbage
Donna Culotta
Carol & Robert Culver
Kathleen & Bob Cummings
Ellen & James Cummins
Christy & Lou Cushman
Mary Keys Cutler & Lee Cutler

D

Elizabeth & David Daigle
Matthew E. Damon
Anna Marie Daniels
Mitch Dann
Susan & Joseph Davenport
Peggy & Kirk Davenport
Eliza Davies
Candy & Bill Davies
Kelly & George Davis
Jan & Chuck Davis
Lynne & C. VanLeer Davis
Bonnie & Ronald Day
Timothy & Sandy Day,
Timothy T. Day Foundation
Emily & Charley Dean
Jane & Rich Dean
Dagmar & Robert Deason
Johann Deisenhofer
& Kirsten Fischer-Lindahl
Holly Delagrance
Elise & Nick Delmolino

Melanie Delph
Neeta & Gilles Demeulenaere
Jane & Jeff Deming
Lori A. Demple
Patricia L. Demple
Steven & Roberta Denning,
The Sage Foundation
Kathleen & Doug DeRose
Julie Dery
The DeSota Family
William L. Develyn
Sandra & Devin DeWeese
Susan & Will Dewey
Carolyn & Mark Dewing-Hommes
Brad Dickey
Lynn Dieckmann
Allie DiFiore
Michele & G. Douglas Dillard, Jr.
Gene Dinkel
Ann & Dennis DiPlacito
Robbie Dircks
Cathy & Jeff Dishner
Carolyn & Nelson Dittmar
Hayley L. Ditzler
Susan & Paul Divjak
Carol Dizack
Christina Doherty & Peter Johnson
Marlene & Mark Dolan
Martha & Donald Dolben
Cathy Dombi & Philip Trautman
Elizabeth Donaldson & Stuart Cook
Thomas Doneker
Nancy & David Donovan
Joseph Dopilka
Ellen K. Doremus
Tricia & Richard Dornan
Matilda Dorsey
Karen & Glenn Doshay
Michael T. Dowling
Gayle M. Downing
Traci & Trent Doyle
Kathleen Drager
Forest Dramis
Jane & James Draper
Jane Drexler
Chad & Lisa Drierwer
Nisha & Stephen DuBois
Kathleen Dudaryk
Mary Weber & Robert Duggan
Dr. & Mrs. Gregory A. Dunford
Thomas Dunn, Jr.
Anne Duperault
Pauline Towers-Dykeman
& Paul Dykeman

E

Judy & David Easterly
Tica & Brent Eastman
Cindy & David Edelson
Gloria & Ross Edwards
Susan Edwards
Anne & Robert Egbert
Anne & Joel Ehrenkranz
Randy Elbel
Mitzi & Steven Elkes
Anne & Charles Elliott
Ellen Elliott
Syd & Gary Elliott
Affie Ellis
Anna Ellis
Kathryn G. Ellis
Thomas Engelman
Diana & Richard England
Betsy & Anders Engle
Cece English
Rosemary & Alain Enthoven
Terri Erwin
Aileen & Chad Eskildsen
Kristen & Jeffrey Ettlin
Susan & John Euart
Peter Evans & Kathy Orr
Cathryn & Robert Evans
Sarah Evans
Tom & Tania Evans,
The Thomas M. Evans, Jr. Foundation
Rod Everett

Charlene & Bill Ewald
Patty & Frank Ewing
Kathy & Tom Ewing

F
Roxanne & Tom Factor
Kenneth E. Fait
Jaquelyn Lenth & Andrew Falender
Meredith Fanning
Heath & John Faraci
Kathy & Lou Fatkin
Mary Ellen & William Fausone
Elizabeth & Gary Fazzio
The Feagin Family
Carole Feld
Jill Feldman
Mary Weatherhead
& Steven Feldman Family
Joanne & Ritson Ferguson
Joanna Ferrero
Robin & John Fields
Heidi Fieldston & Howard Ostroff
Anne & Eugene Fife
Elizabeth & Gerard Findlan
William M. Finerty
Jill Veber & Ray Fink
Tracy & James Fish
William D. Fisher
Gary Flail
Charles M. Fleischman
Liz & Keith Fleischman
Francine Fleming
Patrick Fleury & Emily Reycroft
Sara Flitner
Rick Flory & Lee Robert
Michael Foley
Emily & Ryan Foley
Nancy S. Footer
George W. Ford
Jayann Fordon
Betsy & Peter Forster
Kimberly Fossland
John Foster
Jill & Michael Foster
April & George Fout
Donald & Maryellen Frank
Gaylyn & Brett Frantz
Janet & Jim Frantz
Lisa Franzen
Claire Fraser
Alison & William W. Freehling
Family Foundation
Cheryl N. Freitag
Hollis & Ro French
Sarah & Calvin Frese
Patrick Frey
Kellisue Friedman
Barbara & Steve Friedman,
Friedman Family Foundation
Lisa & Are Friesecke
Becky & Tom Frisbie
Jane & Ronald Frisch
Biran Garrett & Stephen Fronk
Linda & Adam Fuller
Julie Fulpas

G
Regina Pitaro & Mario Gabelli
Mary & Thomas Gablenz
Sarah & Jeremy Gabrielson
Andrea & Joe Gajewski
Rebecca & Brendan Gallaher
Angel Gallardo
Jane Gallie
Linda & Don Gambatesa
Candace & Jeffrey Garber
Dawn Gardner
Kathy & Lee Gardner
Robert E. Gardner
Betty & Richard Garrison
Lydia Garvey
Kristen Geehring
Kathleen Geer
Lynn P. Genzlinger
Elizabeth & Greg Gerhard
Virginia & Gary Gethmann
Peter Getsinger
Lisa Erdberg & Dennis Gibbons
Donald Gibe
Mary Gibson Scott & Roger Scott
Dr. Kari Gibson
Maggie & Les Gibson
Susan Gibson
Kelly & James Gilbert

Peggy Gilday & Maho Hakoshima
Ann & Bill Giles
Sharon & Edward Gillum
Martha & John Gilmore
Adah P. Ginn
Christen & Kai Girard
Gregory Gish
John R. Giurgevich
Jay D. Glass
Gregory J. Glenn
Caroline Jada & Michel Glouchevich
Kathleen & Michael Glover
Amanda & Rob Goeke
Marlene & Barry Gold
Alison Goldenberg
Joan & David Goldfarb
Carl S. Goldfischer
Gregg Goldschlager
Harrison Goodall & Lela Chavez
C.D. Goodiel
Michele & Charles Goodman
Amy & Michael Goodman
Kirsti & Matthew Goodwin
Sharon & Bill Gordon
Catherine C. Grabowski
Antonio J. Gracias
Jody Gragg
Nancy Graham
Marcia & Alexander Grande
Gregory Grant
Linda & David Graves
Heather Gray
James Gray
William E. Gray
Perrin & Bruns Grayson
Susan & William Grebenc
Myrna & Stephen Greenberg
Marcia S. Greenblatt
Joseph & Phyllis Greene
Ellen Greeneisen
Ada A. Sanders
& Dr. William M. Griffin
Margi Neale Griffith & Tim Griffith
Trevor Griffith
Jean & John Grove
Claire & Michael Guadagno
Alana Guarnieri
Mary & Richard Guenzel
Judy & Henri Gueron
Jill Jachera & Fernando Guerrero
Suzanne & James Gullett
Christine & Charlie Gulotta
Pamela & Michael Gumport
Linda Gunther
Tiffany & Mike Guske
Anne B. Gwaltney
Margaret Gwaltney

H
Lauren & Blair Haarlow
Lydia C. Hadley
Rachelle Hadley
Audrey & Rody Hagen
Maggie Hagen
Mary Haizlip
John D. Haley
Myra Igo Haley
J. Keith Hall
John R. Hall
Anne Love & Matthew Hall
Mary & Richard Hall
Zach Hall & Julie Ann Giacobassi
Susan & Gary Halling
Marsha & Michael Halloran
Gigi & Michael Halloran
Jill Halvaks
Lois Hamilton
Michaela Hamilton
Douglas I. Hammer
Kyu Han & Heinz Maeusli
Francis V. Hanson
Ranae Hanson
Leslye & David Hardie,
and Lachlan L.C. Hardie
Carol & John Harkness
Jill & Scott Harkness
Michelle & Larry Harmsen
Ashley Harpstreith
Lydia & Ron Harrington
Ruth Harrington & Tim Bradley
Renee & Steve Harrington
Molly & James Harris
Ann & James Harris
Joan & Ronald Harris

Melissa & Shepard Harris
Lori Harrison
Sandy & Ronald Harrison
Chris & Ross Hartley
Sharron & Mike Hartley
Jan & Bob Hartman
Patty Hartnett
Kristin & Andrew Harwood
Douglas Hattery
John Hattrup
Chase Haubert
Cathleen & Fred Hauenstein
Meg & John Hauge
Brie Havens
Bruce Hawtin
Mary & William Hayes
Nancy & Jim Hayner
Christina Pehl & Mark Headley
Kathy & Druby Hebert
Deborah & John Hechinger, Jr.
Carol & Richard Hecklinger
Judith & Timothy Heffernan
Tracey & Jeffrey Heilbrun
Christopher Brown
David F. Hellings
Karen & Thomas Helm
Patricia Hemeon
Kerri Ratcliffe & Doug Henderson
Caren & Jeff Hendren
Linda Hendry
James R. Henny
Susie & Carlton Henson
Edward D. Henze
Dawson Her Many Horses
Linda Herbert
Larissa Herczeg
Jan Herman
Bonny & Mark Hershberger,
Hershberger Design
Lynne & Robert Heskett
Mary & Ben Hesse
Emily Hewitt & Eleanor Acheson
Frederick & Christine Hibberd
John Hieber
Tina & Bridger Hill
Christopher Hill
Leslie & David Hill
Lisa Hill
Corbin Hillam
Kimberly & Jon Hindman
Jerrold Hirsch
Cynthia & Tom Hirsch
Berte Hirschfield, Alan J. Hirschfield
Family Foundation
Wendy & Ted Hobart
Karen & Richard Hobbins
Phil Hocker
Sue Hodge
Stephen Hoff & Lenore Honasson
David S. Hoffman
Heidi & Lance Hoffman
Carole & Norman Holley,
C&N Foundation
Lori Hogan
Lannie & Bill Hoglund
Beth Anne & Raymond Hohenberger
Padgett Hoke & Sam Zuckerman
Valerie Luckey & Henry Holdsworth
Elisabeth & Peter Holland
Catherine & Tom Holland
Alan & Marsha Hollander
Krista Hollis & Erik Kimball
Mary Ann Holmes
Marne & Ed Holstein
Carolyn Holt
Candice & Lindsay Hooper
Cheryl Hope
Debby & David Hopkins
Michael & Ann Horn
Gretchen & Allan Horner
Anne Orsoni Horner & Martin Horner
Hope Horton
Margaret & David Hoster
Robert M. House
Patricia & John Houseman
Martha & Ken Howard
Kevin & Patty Howard
Estate of Deborah Howell
India Howell
David Howk
Penney & A.C. Hubbard
Linda & Robert Hudacsko
Nora & William Hudson
Mercedes Huff
Molly & Craig Hughes

Doreen Hughes
Gail Hughes
Krista & Kevin Hughes
Mary & John Hull
Sarah Hulvershorn
Caroline Humer
Dawn & John Hummel
Family Fund of the Community
Foundation of Jackson Hole
Gina Humphries
Maggie & Jim Hunt
Roby Hurley
Vicki & Charles Hutson
Deborah Atwood & Robert E. Hyman

I
R. Patrick Irvin
Marie & Robert Irvine
Ben Isbell
Lori Iverson & Chris Harder
Kathy & Charlie Izard

J
Catherine & David Jackson
Jill & Kip Jacobs
Gail Ehrlich & Drew Jaglom
Nancy & Gary Jahn
Joanie & Evan James
Cindy & Jeremy James
Frances & William Jamison
Emily & Adam Janak
Michele & Paul Jankosky
Michele & Randall Jarrell
Jacque & John Jarve
Katie Jarve
Nancy & Bob Jaycox
James & Karen Jenchura
Laurie & Chip Jenkins
Meghan & Latham Jenkins
Julianne Jenkins
Reece Jenkins
Rush Jenkins & Klaus Baer
Carol & Donald Jensen
Alan Jermann
Lynne & Richard Jewell
Rodney Jex
Rosalba & Juan Jimenez Bedolla
Millie Jimenez & Greg Ley
Adam Johnson
Leslie & Chris Johnson
Hsiang Lan Johnson
Hough & Kirby Johnson
Elizabeth Johnson
Susan & James Johnson
Jeffrey Johnson
Maddy & Brian Johnson
Renee L. Johnson
Sara Jane Johnson
Scherry Johnson
Connie & Bobby Jones
Cherie Jones
Jeanne & David Jones
Denise Jones
Cindy & Evan Jones
Julie & Jay Jones
Leslie Jones & Paul Zeller
Alison & Richard Jones
Mary Ellen & Tim Jones
Samantha & Michael Jordan
Michele Joseph
Matthew Jurak
Connie & Jerry Jurena
Susan Juvelier

K
Vera & Michael Kahn
Janet & Steve Kalalian
Stanley M. Kanarowski
James Karon
Ellen & Michael Karpf
Karen & Russell Kasper
Sheilah S. Kasten
Lauren Katz & Justin Wunderlich
Lisa & Matthew Katz
Diane Kaub
Shirley & George Kaub
Nobuko Kawai
Lydia & David Kawaler
Nancy & Harvey Kayne
Margaret M. Keady
Georgina Keating
Amanda & Jason Keel
Joan Kelleher
Sara & Ed Keller

Jacquelyn Kelly
Joan Kelly
Ryan Kelly
Karen & John L. Kemmerer, III
John Kennedy
Mary Jo Kerr
Jane & Ranse Kesl
Rebecca Ketelsen Popp
Phyllis & John Kidd
Gail McPhaden & Robert Kiefer
Loyola M. Kieffling
Jane & Harold Kiena
John & Jennifer Kilgrow
Michelle Killion
Kathleen & Paul Kimball
Liz & Andy King
Elaine & Gary King
Beth & Michael King
Leigh Ann & Peter King
Robin & Bill King
Susan & Fred Kingwill
Lee & Roger Kintzel
Walker Kirby
Anne & Ronald Kirschner
Leilani Kitchings
Gail Kitowski
Noah Klag
Dawn & Alex Klein
Josh Klinefelter
Donald Klise
Mary Lynne & Stephen Kneller
Jaclyn & Rick Knori
Lesley C. Knowles
Kraig Kobert
Kathryn Nyrop & Stephen Koch
Katherine Kohatsu
Stacy & Dan Kohl
Senator Herbert H. Kohl
Mary Coyne & William Kolasky
Eddie Kolsky
Joyce & Michael Konrad
Pam & Charles Koob
Susan Lancelotta & Nick Koutrelakos
Marianne & Lawrence Kown
Sarah & Steve Kraemer
Janice S. Kramer
Melissa & Joe Kraus
Ann Whittaker & Cliff Krauss
Judy & Bill Krips
Margo Krisjansons
Kay & Jack Krouskup
Jeffrey & Robert Krueger
Pui & Habibah Kuan
Gregory Kudlac
Ying Qian & Rishi Kumar
Julie & Larry Kummer
Janet Kupchick
David Kupsey
Amir Kurtovic
Jane & Chuck Kusek
Lisa & Mel Kuwahara

L
Laura & Ted Ladd
Christiane & Mark Ladd
Liz & Thomas Laffont
Nancy & Bruce Laird
Lisa M. Lambert
Susan & Yair Landau
Lani & Wray Landon
Jeanne & Edward Lane
Patti Roser & Andrew Langford
Geraldcan & Gregory Lantier
Joan Lapham
Peg & Tom LaPoint
Helen Lareau
Jan & Jack Larimer,
Larimer Family Foundation
Lynn & Don Larson
Ann & Stephen Laubach
Kathleen & Allen Lauer
Jack Laviano
Cheryl & David Lawrence
Christina & Gerald Lawrence
Mary Beth & Scott Lazzaro
Lea Charitable Trust
Amy Leander
Kenneth Leary
Diane Lee
Phil Leeds & Heidi Clendenin
Helen & Michael Lehmann
Shira Lehmann
Ellen & Lawrence Lehnert
Mark Lehnert

Shauna Leinbach
 Elena Leinweber
 Barbara Lemley
 Nancy Leon & Charles Thomson
 Barbara & Richard Leonard
 Joseph Lepkowski
 Jennifer & Robert Lerch
 Daniel Lessin
 Sue & Alan Letson
 Tim Libassi
 Kathy Lichlyter
 Nancy & Reid Liffmann
 Maureen Lindsay
 Dorothy & Thomas Linthicum
 Paul A. Lisk
 Michael W. Lissner
 Jenny & Kurt Listug
 Jodi & Jack Livingood
 Kimberly & John Locus
 Catherine & David Loevner
 Carolina & Ken Lofgren
 Cathy Logan-Pearce
 Mary Lohuis
 Kristin & Doug Londal
 Gretchen Long
 Katsey Long
 Carolyn & Jack Long
 Lisa Lord-Price
 Therese & Jeffrey Lotman
 Anne & Steve Louis
 Kathleen Low
 Sharon & Ross Lowe
 Wendy Lowe
 Maria Hayashida & Max Ludington
 Barbara & Steven Ludwig
 Alice & Rance Lumsden
 Lenea & Tyler Luna
 Deb & David Lund
 Gail & Jay Lund
 Kristen Lund
 Margaret & Rich Lurie
 Randy Luskey,
 The Dorothy Jordan Chadwick Fund
 Elizabeth Lutton

M
 Kristin MacDonald
 Aly Mackenzie
 Ann & Clark MacKenzie
 Doug Mackenzie
 Paige & Ian MacLeod
 Catherine & Douglas MacMahon
 Dana MacNamee
 & Bay State Animal Clinic
 Patricia & Don MacNaughton
 Tammy & John MacWilliams
 Joan Maddocks
 Elise & Jim Mahaffie
 Mandy & George Mahoney
 Carol & Bill Maloney
 Anthony Mamakos
 Michael Maningas
 Jody & Jeff Marcellus
 Peter Marcellus
 Richard W. Marcellus, Jr.
 Heather Marcus
 Martha Mari
 Susan & Jay Markowitz
 Kevin Marrs
 Adrienne & John Mars
 Carol & William Marsh
 Richard Marston
 Samantha Martens
 Nancy & Everett Martin
 Jenna & George Martin
 Jane & Steve Mascia
 Margery & Edgar Masinter
 Linda & Steven Mason
 Barbara & Bradley Massam
 Anthony Mastromarino
 Vickie & Adam Mates
 Joan J. Mathews
 Ruth Valsing & Ron Matous
 Matthew Matson
 Martha Matthews
 Linda & Matt Matthews
 Catherine Matthews-Pennanen
 Jennifer Matthies
 Leslie A. Mattson & Will Rigsby
 Debbie & Marshall Matz
 Trish May

Andrew Mayer
 Kimberly Mays
 Shelly & Joe Mazzeo
 Rachael & Patrick McAleer
 Holly McAllister Swett
 Patricia & Robert McBrayer
 Jennifer J. McCall
 Kathleen McCarragher
 Amy & Forrest McCarthy
 Mary R. McCarthy
 Gina McCausland
 Barbara & Pat McCelvey
 Harriet & Duncan McClelland
 George McClelland
 Holly McCollister
 Stephanie A. McCullough
 Elizabeth L. McDoulett
 Andersen Corporation
 Judith McFarlane
 Diane, Scott, Clara, & Lucia McGee
 Meghan McGill
 Marjorie McGillicuddy
 Lee Ann & Barry McGinnis
 Kim & Bob McGregor
 Monica McGregor
 Nancy McGregor Manne & Neal Manne
 Bernard McHugh & Frances Clark
 Dawn & Michael McHugh,
 Quality Painting & Services of JH
 Allan McKittrick
 Holly & Wade McKoy
 Deborah McMahon
 Ann McMillan
 Kimberly & John McMorrow
 Mary McNamara
 Ruth McNamara
 Karen Herren & Tim McNamara
 Ryan McQueeney
 Mary H. McSorley
 Kate & Brad Mead
 Victoria & Paul Medvec
 Withrow W. Meeker
 Christine & Randy Meier
 Irene & Morris Mellon
 Ioulia Melomed
 Athena & Greg Merage

Carol Mersereau
 Suzanne & Ahmet Mesinoglu
 Kathy Remus & Michael Meyer
 James Meyer
 Lisa M. Meyer
 Elizabeth & Dean Mihas
 Christopher Mill
 Deborah & Allen Miller
 Sharon & Michael Miller
 Elaine & Rick Miller
 Kim & Kyle Mills
 Ellen Milt
 Amy Minella
 Angela & John Minger
 Tim Minning
 Ellen & William Minor
 Emma Hill & Michael Minter
 Sharon Mion
 Judy Bradley & Dave Mitchell
 Donna Mitchell
 Jane Mitchell
 Mary & Masakazu Miyagi
 Laura C. Moffitt
 Marilyn & Vincent Mogas
 Robert Molen
 Zachary Moller
 Stephen L. Moloney
 Carol & Joe Monaco
 Carol Mongeluzzi
 Judy & Matt Montagne
 Tom Montgomery
 Cristina Moody
 Hannah & Will Mook
 Susan & Charlie Moore
 Jim Moore
 Lucy & Jeffrey Moore
 Kate Moore
 Jillian & Clay Moorhead
 Alice & Rod Moorhead
 Anne & Michael Moran
 Barbara & Michael Morey
 John Morgan
 Michael Moriarty
 Stephanie Morimoto & Matthew King
 William Morin & Lolly Lanska-Morin
 Annie & Daniel Morita

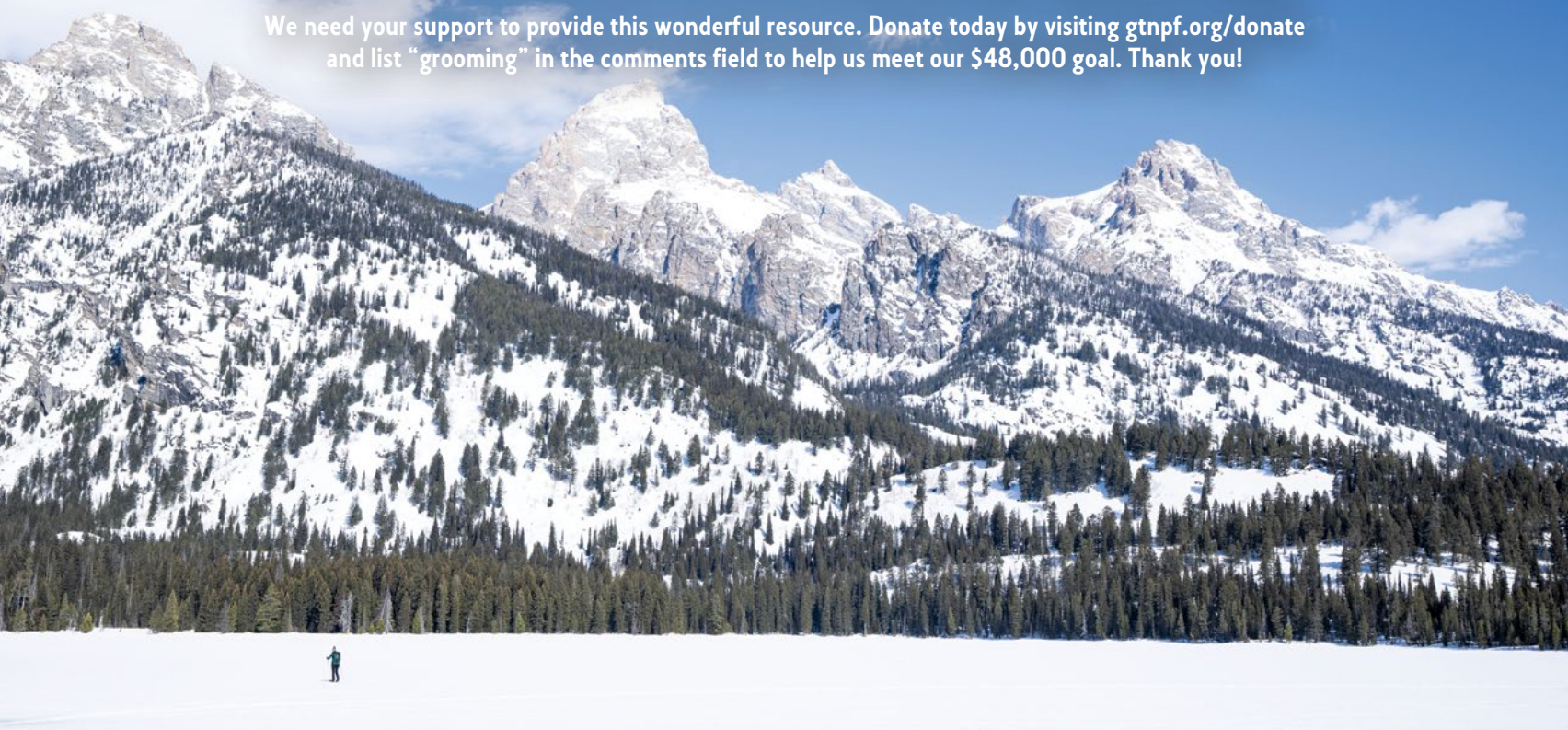
William J. Morokoff
 & Benjamin F. Rodriguez
 Melanie Morris
 Susan & Stephen Morriss
 Enid & Lester Morse,
 The Morse Family Foundation
 Randall Morse
 Stacey & Bob Morse
 Carolyn & Marshall Moss
 Eric Muehlhauser
 Nancy & David Mueller
 Leslie & Paul Mulligan
 Moira & Ken Mumma
 Dayle Munn
 Christine & David Murdoch
 Gwen Murdock
 Lee S. Murnick
 Maxine Murnick
 Arlene & Kevin Murphy
 Elizabeth & Arthur Murphy
 Dr. Collin Murphy
 Laura & Matthew Murphy
 Sara Lee & William Murphy
 Brenda Murray
 Nancy Murray
 David & Marion Mussafer
 Kate & Kenneth Muth
 Phoebe & Gray Muzzy,
 The McCrea Foundation
 Gordon Myers
 Robin Riske & Mason Myers
 Celeste & Stephen Myers
 Traci Myers

N
 Jeannette & Vernon Nagel
 John Nau
 Dale & James Naylor
 Jackie Neckels
 Jolene & John Neckels
 Danna & Andrew Nehrbas
 Jolie & Chuck Nelson
 Greg Nelson
 Marilyn C. Nelson
 Megan & Daniel Nelson
 Caryl Page & Michael Nelson
 The Lisa & Victor Nemeroff Foundation

ARE YOU READY FOR ANOTHER WINTER OF EXPLORING GRAND TETON NATIONAL PARK?

We are pleased to share that we will be grooming the Teton Park Road three times per week this season. The fourteen-mile track follows the base of the mountains, providing cross-country skiers, snowshoers, walkers, and other users with access to one of the most spectacular winter destinations in the West.

We need your support to provide this wonderful resource. Donate today by visiting gtnpf.org/donate and list “grooming” in the comments field to help us meet our \$48,000 goal. Thank you!



Diana L. Nevins
Kathleen & Galen Newhouse
Alison & Kurt Newman
Thomas W. Newsome
Paul Nguyen
Lori Nichols
Carol & Robert Niegisch
Elizabeth & John Nielsen
Chad Nikirk
Pam & Dick Niner,
The Niner Foundation
Stephanie C. Ninneman
Chip & Dany Nisbet
Claire Nishimura
Maio & Levon Nishkian
John Nixon & Christine Watkins
Barbara Noah
Charlie Noell
Glennis & Jim Nokes
Melissa & Neal Norman
Nancy & Robert Norton
Tina Nova
Ashli Nudd, DirtInMyShoes.com
Carole & Jack Nunn
Melanie Nussdorf
Margret & John Nystrom

O
Alison O' Rear
Nancy & Ted Oakley
Erica Oakley-Courage
Deirdre O'Brien & Marie Hanson
Ashley & Henry O'Connor
Ann & Canton Odonnell
Dorothy & John O'Dwyer
Sherelyn Ogden
Julie & Hugh O'Halloran
John O'Hara
Wendy B. O'kane
Marina & Gregory Olafson
Jackie & Kenneth Oldham
Marlene & Michael Olin
John Oliver
Kimberly & Craig Olivieri
Kathleen Heenan & Clarence Olmstead
Emily Olson
Marianne & Clas Olsson
Mia Jensen & Sean O'Malley
Jeanette & James O'Mara
Janet & Bill O'Neil
Katie & Peter O'Neill
Judith & Donald Opatrny,
The Opatrny Family Foundation
Claudette & Kenneth Opland
Sarah & Eddie Opler
Kathy & Mark Oppenhuizen
Margaret Ordway
Holly & Carlos Ortiz
Pamela Ott
Beverly & Vernon Ottenritter
Ken Overfield & Eugenie Copp
Patricia Ann Owens
Neal Oyama

P
Debra & Michael Packer
Lisa Padalino
Nancy & Dan Paduano
Gregory Page & Kathleen Ann Blatz
Abby & Scott Page
Scott Paling
Lynne & Tim Palmer
Alice Pang & Benjamin Boesel
Lara & Pat Pappas
Gregory & Sheri Parker
Biba & Jon Parker Foundation
Peggy Jo Parker
Marilyn Parkinson
Doug Parks
Sally & Charles Parmigiani
Roxann & James Parran
Cindy & Michael Parseghian
Louise & Joe Parzick
Nancy & William Pasfield
Dorothy H. Patterson
Ernest Patterson
Susan & John Patterson
Andrea Paul
Cassandra & John Paul
Amy Pauli
Mark Pavilonis & Patricia Crispin
Donna & Jerry Pawlikowski
Martha & Bill Payne,
Beard Payne Family Foundation

Chris Bryan & Trey Peacock
Erika Pearsall & Ned Jannotta
Julia & Brad Peck
Anne & Robert Pedrero
Cynthia & Fred Pennekamp
Linda & Larry Perlman
Lorna & David Peterson
E. Scott Peterson & Judith M. Desenis
Lauren Peterson
Elisabeth Petkevich
Suzanne & Clay Petrey
Kelli & Joe Petrick
Marian & Richard Pfeifer
Emilia & Brian Pfeiffer
Ronald W. Phillips
Kindra Philpot
Gina Pate & Stephen Pierce
Terri & John Pierce
John Piper
Shirley & Paul Piper
Carolyn & Bob Pisano
Kevin Pluim
Stacy & Jared Pobre, Caldera Lab LLC
Gloria Polis
Floren Poliseo
Gary M. Pollock
Carol & Steven Poole
Robert E. Pope
Marcus P. Porcelli
Beatrice Porter
Diana Pratt
Allison & Robert Price
Wendi & James Proffitt
Luther Propst
Pruzan Foundation
Kasey & Len Purkis
Shobha & Venkat Purushotham
Annie & George Putnam

Q
Dr. Marten W. Quadland
& Dr. Paula E. Szytko
James Quinn

R
Michael Racke
Paula Siegel & Jerry Radinoff
Rebekah & Dennis Ragsdale
Deborah & James Ramo
Beth Burrough & David Ramsay
Glenda & Bill Ramsay
Ellen & Fred Ranck
Nancy & Jeffrey Randall
Janna Rankin
Jessica Ransom
Darryl Rasmussen
Alison Rauch
Charmayne Rauch
Diane Rauseo
Ben Rawlings & Nick Kramer
Brenda Rawlings
Diane & Glenn Ray
John P. Ray
Abby & Eugene Record
Robyn & Randall Reedy
Jeff Regan
Coleen & Peter Regan
Penny & Philip Reid
Susan Reid
Dwight Reilly
Susan & Stephen Reim
Joan & Allan Reiskin
Tierney & Richard Remick
Tingwei Ren
Joy & Jordan Renner
Judith & Alan Renshaw
Anne-Marie & Edmund Resor
Kitty & John Resor
Story Clark & Bill Resor
Candace & James Rhone
Darcy & Jeffrey Rice
Lee & Ed Riddell
Patricia & Terrance Ridenhour
Carolyn Rielle
Elizabeth & Michael Riegel
Ari Rifkin
Nancy Rigsby
Linda & Kevin Riley
Lynne Haven & Paul Rinaldi
Susan Riordan
Debra Rischar
Lori Fields & Marlin Risinger
Patty & Bill Ritchie
Robin & Peter Roberts
Anne & John Robertson

Lisa & Steve Robertson
Heidi Robyn
Julie & Don Rocap
Wendy & Larry Rockefeller
Steven Rockey
Larrie Rockwell
Dabney Rohrbach
Elisabeth Rohrbach
Belinda & Ferrill Roll
Terry & Bert Romberg
Paula Romberg
Donald Rome
Suzanne & Jonathan Roosevelt
The Walter I. ('Mike') & Jean Louise
Thieme Fund of the Community
Foundation of Jackson Hole
Rosemary & Bruce Rose
Carolyn Rose
Catherine & Will Rose
Deedie Rose
Lela Rose & Brandon Jones
Jerry Rose
Andrea & Monroe Rosenthal
Charlie Ross
R. Douglass Ross & Joyce C. Frye
Wilson S. Ross
Chad Rothermel & Ali Vitale
Lori & Laurent Roux
Dale Rubenstein
Sandra & Neil Rudo
Marie Royce Ruffle
Molly Ruffle & Bill Deignan
Corinne & David Rumble
Jennifer & John Runnells
Deakins F. Rushton
Sarah & Andy Russ
Patricia Russell
Robert & Louise Ruszkowski
Julia & Steve Ruther
Charlotte & Andrew Rutkowski
Perrin & John Rutter
Betty Ryalls
Ann & Steve Ryan
Charles Ryan
Kirsten Ryan
William Ryerson

S
Jane & Hans Sack
Carol Edmiston & Paul Sakai
Michele & Andrew Salter
Mary Anne & Al Sanborn
Wendy Sanborn
Brad Sanders
William Sanders
Val & Jim Sandham
Louisa & Chris Sandvig
Anita & Julian Saul
Susan & David Saunders
Lindy & Hanley Sayers
Laurie & Tom Saylak
Mallorca & Stephen Sbragia
Angela G. Rose & Frank Scalabrino
Thomas P. Scanlan
Judy C. Scarborough
Anna Lou Schaberg
Cheryl & Mike Schaefer
Jonathan & Alex Schechter
Marge & Bill Scheck
Barbara Zelazo & Michael Scher
Rob Scherpf
Leslie & Andy Schilling
Tim Schirber
Julie & Dan Schlager
Debbie Schlinger
Cynthia & Thomas Schluter
Sophie Schmidt
Carol & Chuck Schneebeck
Matt Schneider
Kristin Schoonover
Cheryl & Matt Schoss
Cathy & Bill Schreiber
Judy Schubert
Brigid Schulte
Ruth Schulte
Kate & Shane Schulz
Jane & Nelson Schwab
Jean & Andy Schwartz
Jamie & David Schwartz
Mark Schweizer
Béatrice Screve
G. Mark Seal & Chris Ludlum
Barbara & Donald Seale
Traci & Jim Seaman

Gretchen & Christopher Sebald
Madelyn & Jerrold Seckler
Mary & Jim Secor
Dennis Seerey
Sue & Daniel Seflick
Renee Seidler
Laura & Scott Self
Mike Sellett
Amy & Steven Seltzer
Nancy Senario
Pamela & William Sengelmann
James Senger
Donna Marie Seyfried
Nancy & William Shaddix
Sandra Shapiro
Mary & William Sharp
Julia & Henry Sharpe
Linda Sharpe
Ellen & Keith Shaughnessy
Nancy Shea
Karen & Richard Shea
Caroline Sheahan
Patti & Richard Sheets
Marisa Sheffield
Donna & Scott Shepherd
Ann Sherer
Paul Sheridan
John Sheriff
Donald & Dragon Sherman
Shirley & Eugene Sherman
Gregg & Sabine Sherrill
Betsy & Will Shields
Eileen Shields-West
Jane Shilling
Rhonda Shockey
Lisa Shoemaker
Katherine & Jack Shook
Karla & William Shopoff
Sandy & Dick Shuptrine
Priscilla & Barry Sibson
Carol & Don Sider
Joan & John Siff
Laura & David Sikes
Sharon Sill
Brenda Silva
Hilde & Thomas Simco
Barbara & Jack Simon
Carter & Talbott Simonds,
Talbott & Carter Simonds Foundation
Neil Simpkins & MiYoung Lee
DeeDee & Don Sims
Steve Sims
Benj Sinclair
Christine & Anil Singh
Judy Singleton, J. Singleton Financial
Margaret Singleton & Ron Weston,
Weston Family Fund
Jackie & Bob Skaggs
Laura & Doug Skidmore
Steven Wolf & Karen Skirvin
MacKenzie Scanlan & Evan Skorpen
Mimi & Frank Slaughter
Dakin Sloss
Patrick M. Sluss
Tina & Sonny Small
The Smart Family Fund
Abby & Mike Smerklo,
the True North Foundation of the
Silicon Valley Community Foundation
Barbara A. Smith
Barton Smith
Kathleen & Benjamin Smith
Blackwell Smith
Dennis Smith
Sindi & Donald Smith
Glynda Smith
Robin & Hampton Smith
Caroline & Joseph Smith
Kathryn Smith & Littrel Clark
Christine & Kelly Smith
Sophie Smith
Will Smith, Wilderness & Emergency
Medical Consulting, Inc.
Wayne Snap
Teri & Mark Snell
Melissa & Jason Snider
Lynette & David Snow
Yves Desgouttes & Margot Snowden
Kathleen & John Snyder
LaDean Sobel
Mona Sobieski
Maureen Solomon
Prisilla & Gregory Sorensen
Audrey & Jim Sorensen
Sandra & Rick Sorensen

Jean Spangler
Roger Spayde
Linda Specht
Diane Spinelli-McLeod
Suzanne & Austin Spitzer
Travis Squires
Carolyn & Tony St. James
Jeannie & Bert Staehr
Joan & William Stafford
Julie & Mike Stalneckner
Patti Stancarone
Nancy & Robert Stanek
Glenna & Wayne Stanhouse
Andrea & Jeffrey Stark
James R. Starnes
Bobbi Stedman
Joyce & Bert Steece
Lisa & Glenn Steele
Paula & Bill Steele
James R. Stein
Ann & Jonathan Stein
Carol Baker & Mark Stein
Mimi & Robert Stein
Emilie & Ethan Steinberg
Terry & Doug Stephens
Ann & Karl Stern
Sandra & Peter Stern
Caroline Stetson Dibble
Anne Stetson
Gary Stevens
Joann Stevens
JD Stewart
Maggie & Keith Stoltz
David Stones & Christy Swanteson
Kate C. Wilkinson & Peter W. Stoops
Meggan & Lawrence Stordahl
Thomas Stork
Diana & Steve Strandberg
Alene Stranik
Michelle & Robert Strauss
Robert E. Strawbridge III
KO Strohbehn
Connie Bond Stuart & Jim Stuart
Victoria & Dan Stutter
David Suehsdorf
Amy Sullivan
Craig Sullivan
Jane & Mike Sullivan
Anna & Steve Sullivan
Mary & Rick Suman
Hilary & Jon Summer
Mary & Will Surber
Joyce & Ronald Surdam
Kelly & Dustin Sventy
Karl Sward
Pam & Phelps Swift
Rebecca & Ted Swift
Karla R. Swiggum
Elizabeth & Richard Sword
Kara Szczepaniec

T
Dorothy Bedford & Rush Taggart
William Taggart
Alison Taggart Barone & Larry Barone
Robert Takazawa
Rose & Peter Tarantino
Michael Tartagliano
Naomi & Mark Tate
Carolyn & Larry Taverna
Sherri & Ian Taxman
Melissa & Jorgen Taylor
Ken & Caroline Taylor,
Kenneth & Caroline Taylor
Family Foundation
Mark Taylor
Linda & Tom Taylor
Dawn & Bruce Tecklenburg
Wayne Teetsel
Donna & Rick Tempest
Ellen Temple
Susie Temple
Mary Lynn Tenebaum
Geoffrey & Jennifer Tennican
Stephanie Terrell
Phyllis & Bruce Thaler
Marcia & Harry Thalhimer
Morton Thalhimer, Morton G.
& Nancy P. Thalhimer Foundation
Carol Thomas
Shirley & Dan Thomas
Norman A. Thomas, III
Jill & Robert Thomas
Susan & James Thomas
Susan & Bill Thomas

Cindy & Jim Thompson
Pamela & Joel Thompson
Dr. & Mrs. Randall Thompson
Ro & Timothy Thompson
Marsha & Bill Thompson
Katheryn Thorburn
Amy & Ray Thurston
Paul & Leslie Tillotson
Angelica Timpany
Brenda & B.D. Tiner
Amina Tirana
Patricia & Tom Tisone
Kathy & David Titley
Julie & John Tobiason
Enrico Tobing
Nancy & Douglas Todd
Ronald M. Tollison
Robert O. Tomlinson
Cecilia Tommos
Gary L. Tompkins
Kathy Hayes & Vic Tortorelli
Pamela Touloupoulos
Marree & John L. Townsend, III
Kevin Traider
Kerry R. Trainor
Lamar Trant
Eric Travis
Susan & Gene Tremblay
Ralph R. Trover & Sheldon B.L. Smith
Clinton Troxel
Jeana & Gary Troyan
Dr. Florina Tseng
Gerald Tucker
Sandra & Bruce Tully
Mary Kay & John Turner
Gail & R. Gerald Turner
Polly & Wayne Turner

U
Amy & Steve Unfried

V
Stacey Valerio
Lisa & Mark Valley
Joanne & Michael Vallone
Karen & Kent Van Riper
Martha & Warren Vangenderen
Arthur VanRensselaer
Amy Vaughn
Jo Anne & Larry Vaughn
Jill Veber
Christopher Veitch
John B. Vermynen
Barbara & Mark Vermynen
Edward Vervoort
Mark Virgilio
Constance & James Voelz
John Vogt
Michelangelo Volpi & Toni Cupal
Kimberly Vukovinsky

W
Veronica C. Wald
Jim Waldrop & Charlotte Reynolds
Lucy Rockefeller Waletzky, MD
Anne & Ron Walker
Susan Walker
Celia & Rob Wallace
Karen Walsh
Betty & Jim Walton
Daniel Walz
Lisa & Mark Wan
Cathy & Gregg Ward
Deb & Bill Ward
Liz Warnock
Kevin M. Warsh
Gay Watanabe
Teresa & William Waterman
Jennifer Pietenpol & Ian Wattenmaker
Patricia Wattenmaker
Susan A. Watts
David B. Waud
Mark Wawn
Ellen L. Weaver
Todd Weaver
Dr. Debbie D. Webb, D.D.S.
Nancy Ashmore & Kenneth Wedding
Lynn & Ken Wegner
Tamara Weinberger
Gwen & Evan Weiner
Elizabeth Weinhold
Sherri & Mark Weinman
Leslie & Alan Weiskopf
Kathy & Barry Weiss

Maryjo & Gary Weissman
Daphne & Stuart Wells
Yvette & Robert Werner
Lynda L. West
Mary Kay West
Matt Westphal
Whiteley & Nick Wheeler
Juliann Whelan
Kathy & Gil White
Jeri & Peter Whitfield
Dorothy Whitman
Kristin & Shawn Whitman
Brian Whitney
Bettina M. Whyte
Charlotte & John Wickham
Jennifer & John Wideman
Barbara J. Widman
Lana & Bob Wiese
Beth & Jim Wiggins
Heather Wilcox
Robert W. Willard
Christine & Jeff Willemain
Stefania & Bruce Williams
John F. Williams
Mary & Michael Williams
Robin Williams
Cheryl & William Wilmetti
Kari Wilner
Betty Karol Wilson
Terry & Chris Wilson
Sharon Wilson
Chris & Kurt Wimberg
Claudia Bonnist & Terry Winchell
Cheryl Jones & Jerome Windlinger
Goldie & Paul Winn
Tomi & Pete Winstead
Anne & Ethan Winter
Barbara & Gary Winter
Alan Winters & Sharon Felzer
Bernard Wirth & Sheila McInlay
Doreen J. Wise
Peter Wissel & Susan Philbrick
Karen Wohl
Jim Wolf
Roland Wong
Susan & Megan Woodbury
Sue & Buckner Woodford
John Woodington
Cindy & Dale Woodling
Suzanne & Dave Worley
Victoria Wortham
Noel Wray
Holly & Chris Wright
Virginia & Norman Wright
Cathy & James Wyatt
Matthew W. Wyatt
Daniela & William Wyer

Y
Claiborne Yarbrough
Jeffrey Yarris
Betty Yearout
David Yemm
Joan & Michael Yogg
Connie & Keith Young
Kimberly Young
Randall Young
Ann & Hal Yungmeyer

Z
Alice & Barry Zacherle
Leslie & Jeffrey Zacks
The Karl & Dian Zeile Family
Sharon & Dan Zelenko
Kelly & Steven Zelikovitz
Martha Jones & Paul Zerella
Vicky Zheng
Jackie Zhu
Michele Ziemann-DeVos
Julie & Rick Ziino
Linda Zillner
Jean & Kenneth Zimmerman
Linda & James Zingerman
Rebecca Zornow
Christine Zubricki
Allen Zuckerman
Sarah Zug

CORPORATIONS
Anonymous
AbbVie, Inc.
Alpyn Beauty, LLC
AmazonSmile Foundation
Ameriprise Financial

Amgen Foundation
Andrew Allen Charitable Foundation
Bank of Jackson Hole
Beard Payne Family Foundation
Boston Scientific
Cadence Solutions, Inc.
Caldera Lab LLC
Capital Group Co
Charitable Foundation
Dell Giving
Dorman's Moose Enterprises, Inc.
Enterprise Holdings Foundation
Facebook
First Republic Bank
First Republic Foundation
Four Season I/2 LLC
Four Seasons Resort and Residences
GDL Foundation
Grand Fishing Adventures
Grand Teton Fly Fishing
Grand Teton Lodge Company
Granite Water Works, LLC
Hershberger Design
Icelandic Skis
Intel Foundation
Jackson Hole EcoTour Adventures
Jackson Hole Mountain Resort
Jorgensen Associates
Leadership at Play
Live Oak Fund
Microsoft Matching Gifts Program
Newman's Own Foundation
North Drinkware
Patagonia
Pfizer
Quality Painting & Services of JH
Rendezvous Mountain Rentals
Rendezvous River Sports
Salesforce
Seftick Books LLC
Short Dog Design
Signal Mountain Lodge
Teton Conservation District
Teton Toys
The Hole Hiking Experience
The Huckleberry Foundation, Inc.
The Lexington at Jackson Hole
The Wort Hotel
Tributary Country Club
United Health Group
Vertex Pharmaceuticals
VISA Matching Gift Program
Wells Fargo
Wentworth Vineyard & Ranch, LLC
Wilderness & Emergency Medical Consulting, Inc.
William E. Wecker Associates, Inc.
William R. Cargill Insurance Agency, Inc.
Wyoming Whiskey
Zions Bank

FOUNDATIONS & OTHERS
Anonymous (2)
Alan J. Hirschfield Family Foundation
The Arthur L. & Lily D. Walters Foundation
C&N Foundation
Chapman Family Foundation
The Chapman Hanson Foundation
Charles & Peggy Stephenson Family Foundation
The Charles Engelhard Foundation
Claneil Foundation
Clifford Snider Trust
Community Foundation of Jackson Hole
Cornell Douglas Foundation
Cross Charitable Foundation
Cushman Family Foundation
Dancing Tides Foundation
The Dorothy Jordan Chadwick Fund
EMWIGA Foundation
The Eric & Joan Norgaard Charitable Trust
The Esther & Otto Seligmann Foundation
The Francis & Miranda Childress Foundation, Inc.
The Fruehauf Foundation
Gabelli Funds
Hamill Family Foundation
Hugh Stuart Center Charitable Trust
J.C. Kennedy Foundation, Inc.
Jackson Hole Wildlife Safaris

Joan and Herb Kelleher Charitable Foundation
JP Morgan Chase Foundation
Matching Gift Program
JWJ Family Foundation, Inc.
The Kemmerer Family Foundation
Kenneth & Caroline Taylor Family Foundation
Larimer Family Foundation
Legatus Foundation
The Lisa & Victor Nemeroff Foundation
Louis and Anne Abrons Foundation Inc.
Louis and Nellie Sieg Fund
MacArthur Foundation
The McCrea Foundation
Meg and Bert Raynes Wildlife Fund
Merrill G. & Emata E. Hastings Foundation
Merrill Lynch & Co. Foundation Inc.
The Mildred E. & Harvey S. Mudd Foundation
Moffett Family Foundation
Morton G. & Nancy P. Thalheimer Foundation
Moose Creek Charitable Fund
The Morse Family Foundation
Moudakas Family Charitable Fund
National Fish and Wildlife Foundation
The Niner Foundation
The Norman F. Sprague Jr. Foundation
The Nussdorf Family Foundation
The Opatrny Family Foundation
The Palisades Educational Foundation
Panoram Foundation
Peggy Rose Schneider Donor Advised Fund
Pruzan Foundation
Raintree Foundation
Robert and Eleanor Demple Family Foundation
S&G Foundation
The Seeley Foundation
Sipprelle Charitable Corporation
Smith & Wilcox Blue Skies Foundation
State of Wyoming, Department of State Parks, Historic Sites, and Trails
The Stewart Title Foundation, Inc
Z Tang Z Shuo Foundation
Talbot & Carter Simonds Foundation
Thomas O. Brown Foundation
T.L.L. Temple Foundation
Trout Unlimited
Valach Family Foundation
Wander Project
Wheeler Family Foundation
The W.M.N. Foundation
Wolfensohn Family Foundation
The WYldlife Fund
Wyoming Community Foundation

HONORS & MEMORIALS
Audrey Abbott, in Honor of Trina & Mike Overlook
Pamela Anondson, in Memory of Greg Seftick
Mary Ann & Fred Anthony, in Honor of Heath & John Faraci
Michael & Tommy Atella, in Memory of Greg Best
Mickey Babcock, in Memory of Bill Givens
Penelope P. Barnes, in Memory of Sue Bardett
Julia & Jim Bartholomew, in Honor of Robert & Barbara Bartholomew
Penny & Max Bartko, in Memory of William R. Givens
Frank Bellinghiere, in Memory of Dan Thomason
Tina & Tom Bourdeaux, in Honor of Jerry and Helen Halpin
Mystelle Brabbee, in Memory of Connor Jones
Debbie & Robert Breedlove, in Honor of Rachelle Bernard
Shelly & Jeff Brodie, in Memory of Chris Tuel
Barb Brunjes, in Honor of Dan Seftick
Cheryl Budzinski, in Memory of Stanley R. Budzinski
Kimberli R. Burdett, in Memory of Anthony Burdett
Mike Burnett, in Memory of Frank Mascia
Mary & David Bushnell, in Honor of Debbie Barker
James Caldwell, in Memory of Patty Caldwell

Lynda & Davi Camalier, in Memory of Connor Jones
Donna Canning, in Memory of Ken Canning
Leah & Randy Carpenter, in Memory of Garrett Thomas Carpenter
The Charles Engelhard Foundation, in Honor of Renny Jackson
Beverly B. Cheek, in Memory of Daniel C. Cheek
Patricia Christensen, in Memory of Bill & Josiane Wenz
Tarri Christopher, in Memory of Garrett Thomas Carpenter
Sherry & Ken Clark, in Memory of Colin Clark
Teresa & Tom Clawson, in Memory of Sarah House
Barbara Cogdell, in Memory of Marlene Wood
Deborah & Robert Collins, in Honor of the Jenny Lake Rangers
The DeSota Family, in Memory of Daniel Hulst
Susie Cosden, in Memory of Mary Robin Burrucker
Linda Cox, in Memory of Mary Robin Burrucker
Carole Coyle, in Memory of Danny Coyle
Joan Crittenden & Esperanza Herrada, in Memory of the Chambers family
Dr. Engin Crosby, in Memory of Robin Burrucker
Brenda Cubbage, in Memory of Kay Turner
Donna Culotta, in Memory of Anatolia Epelbaum
Christy & Lou Cushman, in Memory of John C. Cushman, III
Dancing Tides Foundation, in Memory of Conner Jones
Carol Dizack, in Honor of Wally Welker's Birthday and Carol & Wally's Anniversary
Kathleen Drager, in Honor of Rae Rediske
Kathleen Dudaryk, in Memory of Greg Seftick
Randy Elbel, in Memory of Chris Tuel
Affie Ellis, in Memory of Jim Burnside
Anna Ellis, in Memory of Jim Burnside
Rosemary & Alain Enthoven, in Honor of Richard & Tucker Enthoven
The Eric and Joan Norgaard Charitable Trust, in Memory of Eric and Joan
Joanna Ferrero, in Memory of Ken Canning
Tracy & James Fish, in Memory of Eve Everett Fish
Jill & Michael Foster, in Memory of Mark & Mary Foster
Four Seanson I/2 LLC, in Memory of Janica Pantone
Claire Fraser, in Memory of Connor Jones
Cheryl N. Freitag, in Memory of Miles D. Freitag
Hollis & Ro French, in Memory of Tim Martens
Kellisue Friedman, in Memory of Bill Givens
Regina Pitaro & Mario Gabelli, in Memory of Bill R. Givens
Andrea & Joe Gajewski, in Memory of Timothy Martens
Candace & Jeff Garber, in Honor of Matthew Garber & Katelyn James
Peter Getsinger, in Memory of Allyson Getsinger
Dr. Kari Gibson, in Memory of Susan V. Burdett
Gregory Gish, in Honor of Ed Holstein
Antonio J. Gracias, in Memory of Bill Givens
Nancy Graham, in Memory of Frank E. Kostlich
Joseph & Phyllis Greene, in Honor of Jenny Lake Rangers
Claire Guadagno, in Honor of Debbie & Randy Barker
Myra Igo Haley, in Memory of Myra Igo Haley
Jill Halvaks, in Memory of Susan Burdett
Ranae Hanson, in Memory of Mary Robin Burrucker
Ashley Harpstreith, in Memory of Jim Burnside
Edward D. Henze, in Memory of Yvonne
Phil Hocker, in Honor of Jean Hocker
Sue Hodge, in Honor of Dick Hodge

Lori Hogan,
in Memory of Gretchen Neuman

Alan & Marsha Hollander,
in Memory of Susan Burdett

Mary Ann Holmes,
in Memory of Dr. Bill Holmes

Hope Horton,
in Memory of King Bill Givens

Robert M. House, in Memory of
Katherine House & Sarah L. Crocker

Patricia & John Houseman,
in Memory of Helen Kozak

Martha & Ken Howard,
in Memory of Bill Givens

Doreen Hughes,
in Memory of Donna Burke

Intel Foundation,
in Memory of Garrett Thomas Carpenter

Jeffrey Johnson,
in Honor of Maddy Johnson

Julie & Jay Jones,
in Honor of Leslie Mattson

Matthew Jurak,
in Memory of Issac Sturgal

Stanley M. Kanarowski,
in Memory of Madelene Kanarowski

Karen & Russell Kasper,
in Memory of Ray & Naomi Kasper

Sheilah S. Kasten,
in Memory of Joe Kasten

Diane Kaub,
in Honor of George Halversen

Nancy & Harvey Kayne,
in Memory of Fred Kayne

Georgina Keating,
in Memory of Ken Canning

Mary Jo Kerr, in Memory of Charles Kerr

Loyola M. Kieffling,
in Memory of John Kieffling

Leilani Kitchings,
in Honor of Gene Kitchings

Gail Kitowski, in Honor of Scott Petersen

Dawn & Alex Klein,
in Memory of Ronald G. Liss

Susan Lancelotta & Nick Koutrelakos,
in Memory of Nick Gillespie

Amir Kurtovic,
in Memory of Zijah Kurtovic

Nancy & Bruce Laird,
in Memory of William R. Givens

Peg & Tom LaPoint,
in Memory of Dick Barker

Helen Lareau,
in Memory of Kenneth Canning, Jr.

Mary Beth & Scott Lazzaro,
in Memory of Paul Reimers

Barbara Lemley,
in Memory of Amy A. Lemley

Barbara & Richard Leonard,
in Memory of Bob and Edith Grinnell

Joseph Lepkowski,
in Honor of Warcox Kieras

Maureen Lindsay,
in Memory of Chris Lindsay

Barbara & Steven Ludwig,
in Memory of Connor Jones

Lenea & Tyler Luna,
in Honor of Rudy and Carol Luna

Kristen Lund, in Memory of Connor Jones

Heather Marcus,
in Honor of Catherine & Will Rose

Nancy & Everett Martin,
in Honor of Lauren

Leslie A. Mattson & Will Rigsby,
in Memory of Tim Martens,
in Memory of Bill Givens,
in Memory of Ann Ruehr,
in Memory of Connor Jones,
in Memory of Lisa Fleischman

Kimberly Mays,
in Memory of Mavis Berenels

Rachael & Patrick McAleer,
in Honor of Owen McAleer

Robert & Patricia McBrayer,
in Memory of Peter J. Knezevic, Sr.

Elizabeth L. McDoulett,
in Memory of Wayne and JoAnn Bland

Ellen Milt, in Memory of Stephen Milt

Donna Mitchell,
in Honor of Four Pines Hostel

Dayle Munn, in Memory of Joyce Ellis

Gwen Murdock,
in Honor of the Wesley Murdock Family

Dr. Collin Murphy,
in Memory of Virgil C. Murphy

Brenda Murray,
in Memory of William Givens

Jeannette & Vernon Nagel,
in Honor of the Dillards,
in Honor of Doug Mackenzie

Jackie Neckels, in Honor of my retirement
from the federal service

Alison & Kurt Newman,
in Memory of Connor Jones

Tina Nova, in Memory of Connor Jones

Margret & John Nystrom,
in Memory of Ken Canning

The Palisades Educational Foundation,
in Honor of Heath & John Faraci

Dorothy H. Patterson,
in Memory of Kenneth Patterson

Amy Pauli, in Memory of Jim Burnside

Elizabeth Petkevich,
in Memory of Connor Jones

Suzanne & Clay Petrey,
in Memory of Emily Shelby

Terri & John Pierce,
in Memory of Barbara Pierce

Robert E. Pope, in Memory of Elaine Pope

Marcus P. Porcelli,
in Memory of Maria Porcelli

Darryl Rasmussen, in Honor of
John & Thomas Alma Moulton

Brenda Rawlings,
in Honor of Beth Rawlings

Susan & Stephen Reim,
in Memory of Carolyn & Russ Ford

Joan & Allan Reiskin,
in Memory of Charles C. Wang

Darcy & Jeffrey Rice,
in Memory of Bill Givens

Carolyn Rielle,
in Memory of Mom, Dad & Hank

Elizabeth & Michael Riegel, in Honor of
the Jenny Lake Climbing Rangers

Linda & Kevin Riley,
in Memory of Jane Neely

Dabney Rohrbach,
in Honor of Elisabeth Rohrbach

Marie Royce Ruffle,
in Honor of Molly Ruffle

Susan & David Saunders,
in Memory of Connor Jones

Sophie Schmidt,
in Memory of Enrico Schmidt

Judy Schubert, in Memory of Bill Givens

Brigid Schulte,
in Memory of Jim Burnside

Kate & Shane Schulz,
in Memory of Jim Burnside

Traci & Jim Seaman,
in Memory of Ken Canning

Seftick Books LLC,
in Memory of Greg Seftick

Sue & Daniel Seftick,
in Memory of Greg Seftick

Donna Marie Seyfried,
in Memory of Connor Jones

Nancy & William Shaddix,
in Honor of Sharon & Bill Gordon

Mary & William Sharp,
in Memory of James Sharp

Patti & Richard Sheets,
in Memory of Red Matthews

Ann Sherer, in Memory of Charles Wang

Shirley & Eugene Sherman,
in Memory of Christopher Sherman

Eileen Shields-West,
in Memory of Connor Jones

Jane Shilling, in Memory of Chris Tuel

Brenda Silva, in Memory of Ken Canning

Steve Sims, in Memory of Dr. Greg Seftick

Tina & Sonny Small,
in Memory of Lisa Fleischman

Glynda Smith, in Memory of Bill Givens

Melissa & Jason Snider,
in Memory of Rev. Jack Swann

Maureen Solomon,
in Memory of Jim Burnside

Roger Spayde,
in Honor of Trina & Mike Overlock

Joan & William Stafford,
in Memory of Robin Burrucker

Bobbi Stedman,
in Memory of Garrett Thomas Carpenter

Connie Bond Stuart & Jim Stuart,
in Memory of Richard Bond

Jane & Mike Sullivan,
in Memory of Jerry Halpin

Ellen Temple, in Honor of Susie Temple

Cindy & Jim Thompson,
in Honor of their six grandchildren

Katheryn Thorburn,
in Memory of E. Richard Toray

Robert O. Tomlinson,
in Memory of Barbara A. Tomlinson

Kerry R. Trainor,
in Honor of Talbott & Carter Simonds

Mary Kay & John Turner,
in Memory of Bill Givens

Susan Walker,
in Memory of Susan Burdett

Liz Warnock, in Honor of Leslie Mattson

Mary Kay West,
in Memory of Ivan Ellerkamp

Dorothy Whitman,
in Memory of Mary Robin Burrucker

Jennifer & John Wideman,
in Memory of Susan Papa

Beth & Jim Wiggins,
in Memory of Daniel Cheek

William R. Cargill Insurance Agency, Inc.,
in Memory of Timothy Martins

Cheryl & William Wilmetti,
in Memory of Lenny & Penny Marucci
and Doug and Tom Reinig

Kari Wilner, in Memory of Connor Jones

Sharon Wilson,
in Memory of Dr. Greg Seftick

Tomi & Pete Winstead,
in Honor of Barbara & Jerry Carlson

Anne & Ethan Winter,
in Memory of Joselin Matkins

Peter Wissel & Susan Philbrick,
in Memory of William R. Givens

Karen Wohl, in Memory of Connor Jones

Cathy & James Wyatt,
in Memory of Gary E. Kelley

Matthew W. Wyatt,
in Memory of William and Jo Ann Wyatt

Joan & Michael Yogg,
in Memory of Jane Gaertner Yogg

Keith Young, in Memory of Connie Young

Kimberly Young,
in Memory of Heather Paul

Sarah Zug, in Memory of Kyle Gotchel

Clifford Snider Trust

Jack & Barbara Cochran

Lynne M. Davis

R. Renay & Dr. David Dean

Estate of Margaret Dellinger

Ms. Ellen K. Doremus

Heath & John Faraci

Larry A. Castle-Fericks
& Russell Fericks

Estate of Albert J. Fierer

Lisa Claudy Fleischman

Nancy S. Footer

Betsy & Tom Franz

Lisa Erdberg & Dennis Gibbons

Mary Gibson Scott & Roger Scott

Linda & David Graves

Barbara & James Griffin

Dr. William M. Griffin

Gerald T. Halpin Trust

Janice & Robert Hartman

Douglas Hattery

Joan & Arthur Hensley

Estate of Donna M. Hunget

Ann & Rodney Hunter

Deborah Atwood & Robert Hyman

Ellen & Michael Karpf

Michelle Killion

Beth & Michael King

Ronald Kirschner

Dr. Gary M. Krulik

Kathy Lichlyter

Estate of Deborah Howell

Leslie A. Mattson

Katherine L. Mead

Emma & Michael Minter

Judy Bradley & Dave Mitchell

Michael Moran

Carolyn & Marshall Moss

Moira & Ken Mumma

Diane & Gordon Myers

Connie & Steve Nestler

Jeanette & Jim O'Mara

Margaret & Gilman Ordway

Susan & Peter Ordway

Marlene & Gary Peacock

Marie Reardon

Pontair Sackrey

Mary Anne & Al Sanborn

Estate of Robert L. Sanders

Marge & Bill Scheck

Sally Stevens

The Toray Family

Ronald M. Tollison

Elizabeth Weinhold

The Daphne & Stuart Wells
Fund for Nature

Glenn & Vicki West

Bettina M. Whyte

Cathy Swann Wikoff

The Willemain Family

Doreen James Wise

Victoria Wortham

Holly & Christopher Wright

GIFTS IN KIND

Jane & Rich Dean

Paragon Press

Lee & Ed Riddell

short dog design/Laura Quinlivan

PHOTOGRAPHY CIRCLE

Tyson Chavis

Lisa M. Erdberg

Mark Gocke

Hannah Hardaway

Henry H. Holdsworth,
Wild By Nature Gallery

Charlie Hamilton James

Florence McCall Photography

Ed Riddell

Brad Schwarm, Alpenglouw Tours

Ryan Sheets, Sheets Studio

Diana Stratton

HORACE ALBRIGHT SOCIETY

Anonymous (5)

Barbara & Robert Aaron

Cole Benson

Estate of Myrna I. Berlet Trust

Mary & David Bushnell

Estate of Nelda & Eldon Callarman

Charles N. Conover

Revocable Living Trust

GTNPF Staff

Leslie A. Mattson
President

Elise Cheney Delmolino
Vice President of
Development Operations

Christen Girard
Development Officer

Devon Harrison
Assistant to the President

Maddy Johnson
Director of Communications

Ryan Kelly
Senior Director
of Partnership Projects

Megan Kerns
Development Associate

Lenea Luna
Database &
Systems Administrator

Brittany Matthews
Annual Fund Manager

Mary Patno
Director of Accounting

Molly Ruffle
Senior Major Gifts Officer

Wayne Turner
Vice President for Development

Steve Cain
Ecologist & Advisor

Board of Directors

Gregg Ward
Chair

Debbie Jensen Barker

Bruce M. Bowen

Chad Carlson

Margaret Gibson

Deborah Hechinger

Jeffrey Heilbrun

Thomas William Holland

Charlotte Quesada Krugh

Douglas J. Mackenzie

Adrienne Mars

Mary McCarthy

Nancy McGregor Manne

Annie Morita

Sean O'Malley

Gina Pate Pierce

Ed Riddell

Anil Singh

Patricia Stancarone

Ethan Steinberg

Susie Temple

John L. Townsend, III

Rob Wallace

Diana Waycott

Resource Council

Jessica Baker

Kendra Kolb-Butler

Jan Phillips Davis

Lynne Davis

Rich Dean

Robin Fields

Barry Gold

Kirsti Goodwin

Padgett Hoke

Edward Holstein

Adam Janak

Millie Jimenez

Leslie Jones

Ellen Karpf

Jake Lamarine

Max Ludington

Aly Mackenzie

Kate Moore

Clay Moorhead

Robert Morse

Hugh O'Halloran

Trina Overlock

Scott Page

Louise Parzick

Kevin Pluim

Catherine Rose

M. G. (Jerry) Rose

Charles Ross

Judy Singleton

Lisa Steele

Wayne J. D. Teetsel

Jim Waldrop

www.gtnpf.org

Post Office Box 249 | Moose, Wyoming 83012 | t 307-732-0629 | f 307-732-0639

Printed on Recycled Paper by: Paragon Press—SLC, Utah Design: Laura Quinlivan/short dog design—Jackson, WY



CONTINUING the CONSERVATION LEGACY of GRAND TETON
THROUGH PARTNERSHIP and PHILANTHROPY



GRAND TETON NATIONAL PARK
FOUNDATION

Mailing: PO Box 249
Moose, Wyoming 83012

Physical: 115 East Pearl Ave.
Suite 201
Jackson, Wyoming 83001

Address Service Requested

NON-PROFIT ORG
US POSTAGE
PAID
PERMIT #15
SLC, UT

BEAR BOXES

A unique gift for your favorite wildlife enthusiast!

Looking for a special surprise for the person on your list who has everything this holiday season? \$2,500 funds a bear-resistant food storage box in Grand Teton National Park, with a 3 x 5" stainless steel plaque to recognize your person. They'll receive a teddy bear and information about why bear boxes are so important, wrapped in a box and tied with a bow. Your bear box will be installed at one of the park's many frontcountry campsites and help keep Grand Teton's bears wild and visitors safe.

Contact Lenea Luna at 307-732-0629 or lenea@gtnpf.org to learn more and fund a bear box today!

